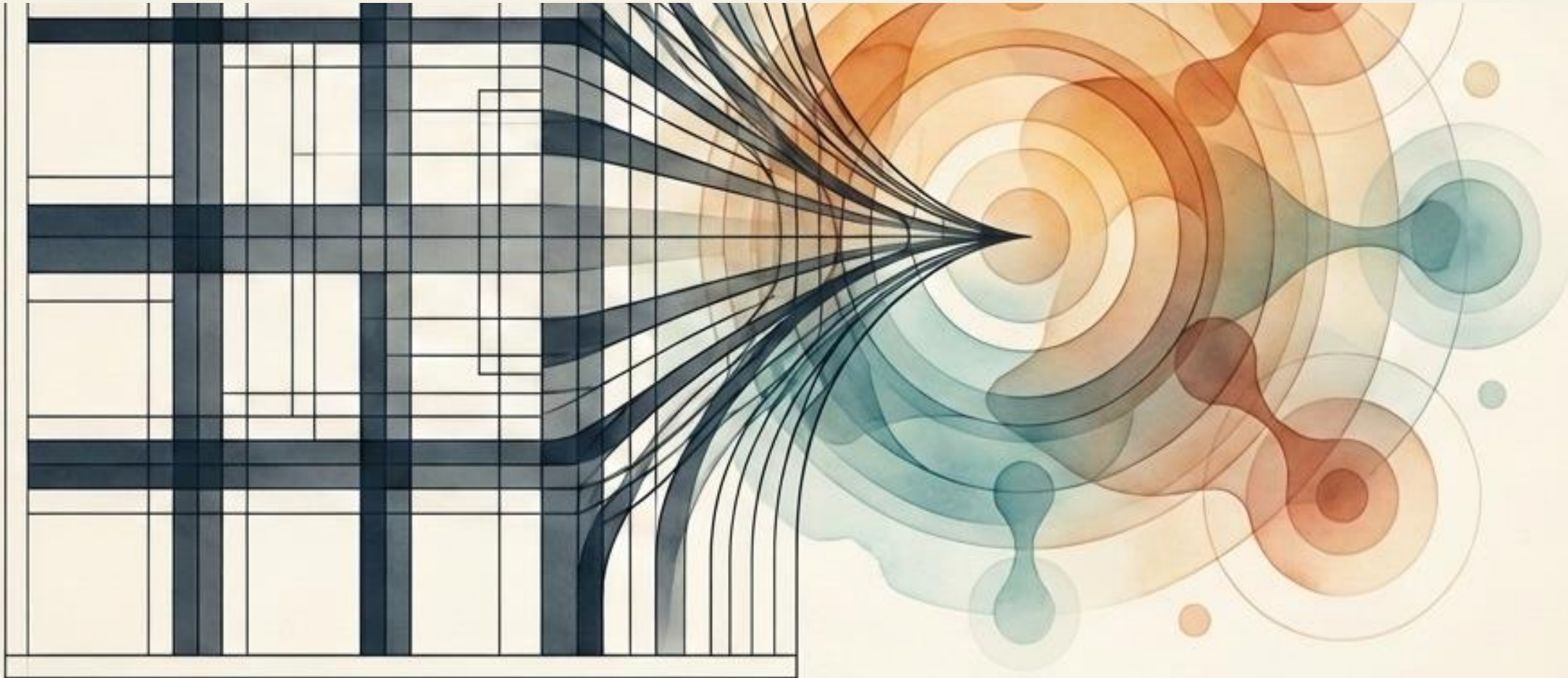


The Anatomy of Law and Crime

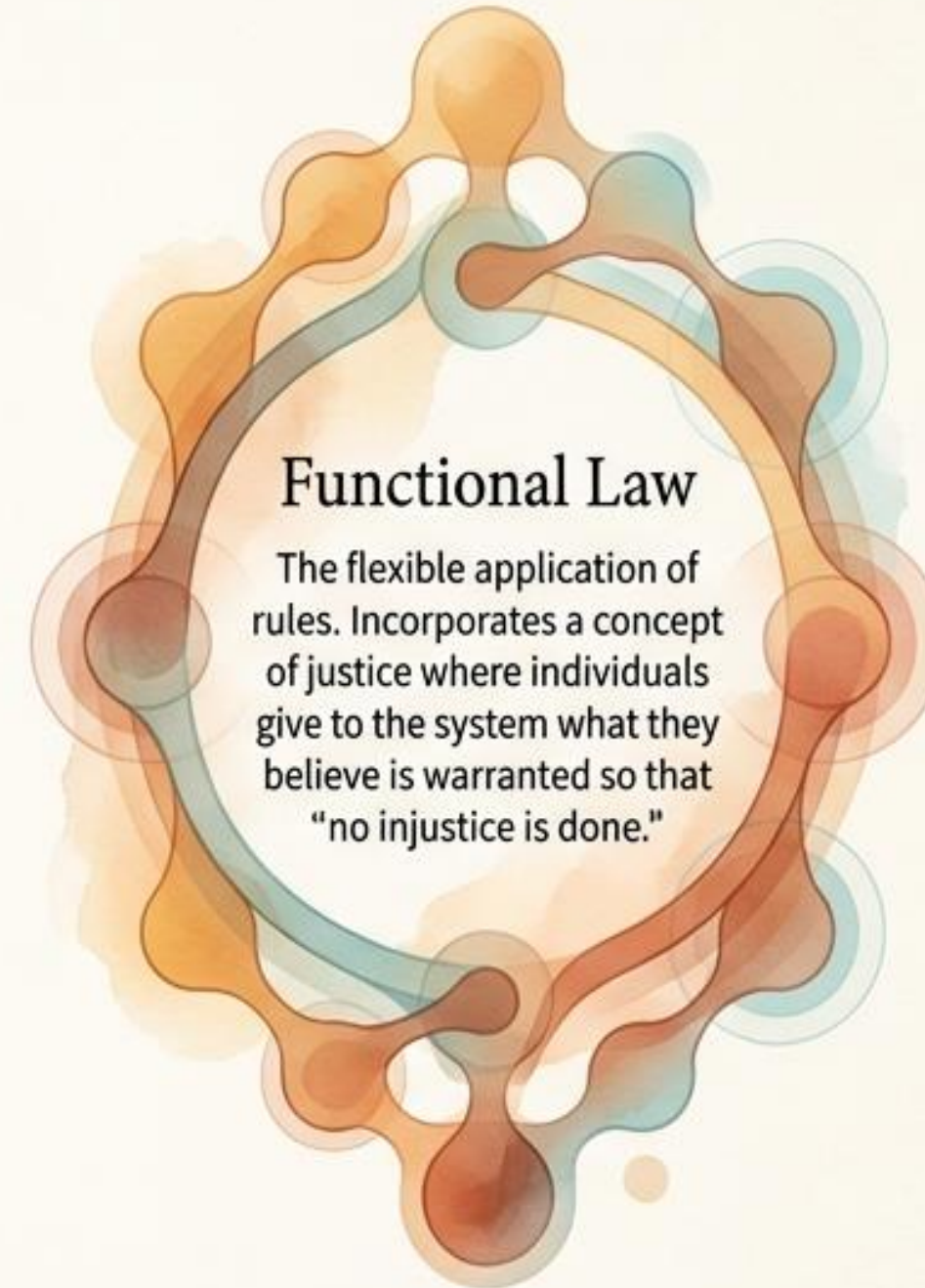
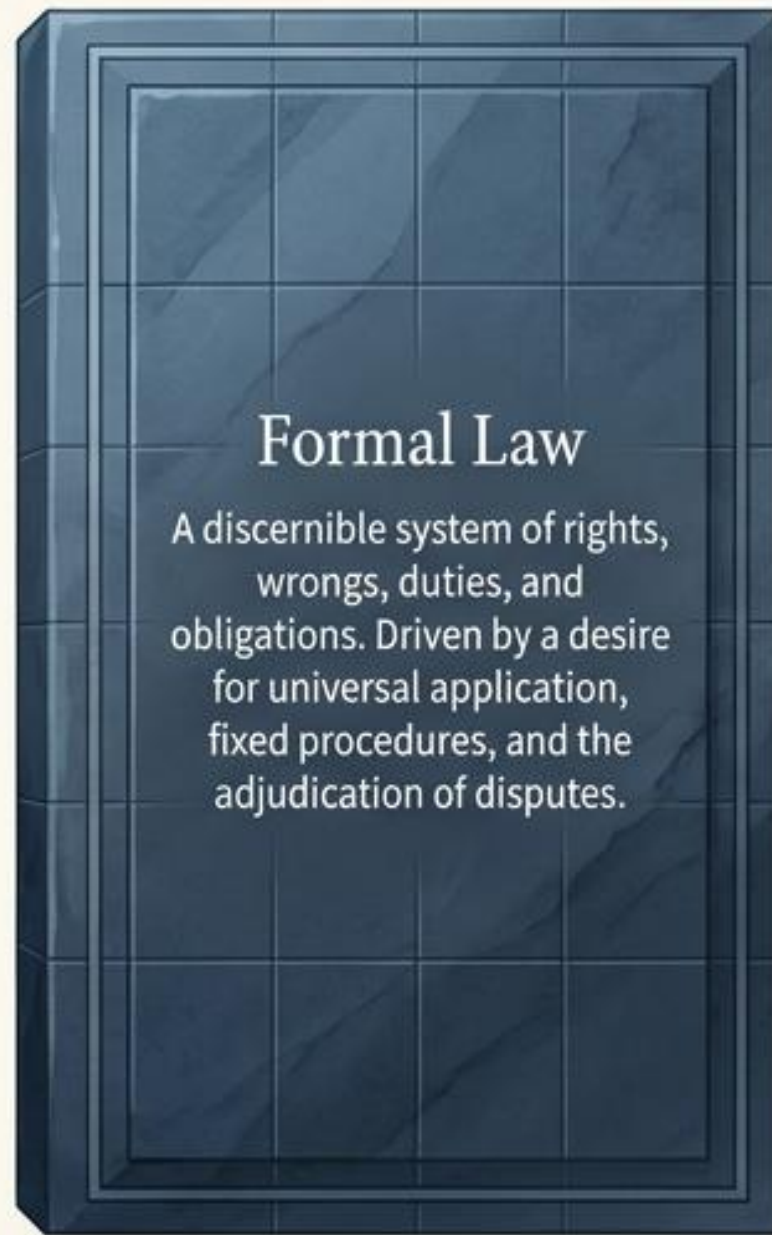
The philosophical friction between legal tradition and social reality



CRIMINOLOGICAL INSIGHTS

BY DR. MRIDUL SRIVASTAVA

Law as a Reflection of Cultural Values



Insight Note: Without law, society is left in anarchy. Crime identifies and holds the limits of individual and group behaviour to promote the social organisation necessary for a durable society.

Law & Crime: From Ancient Codes to Modern Justice

Law reflects cultural values and defines the relationship between individuals and society, tracing from ancient tribal customs to modern legal institutions, highlighting the tension between traditional retributive punishment and modern rehabilitation-focused treatment.

The Evolution of Legal Systems



Three Stages of Legal Maturity

Law evolved from philosophical ground rules to practical craftsmanship, reaching modern intellectual autonomy.



2500–2300 BC:
Sumerian Code:
One of the earliest systematised written laws



1750 BC:
Code of Hammurabi:
The first comprehensive ancient legal system



1804–1807 AD:
Napoleonic Codes:
Established modern civil and penal law in France



The Code of Justinian (529 AD)

This influential document reduced ancient laws into a systematic digest that still forms the basis of common law.

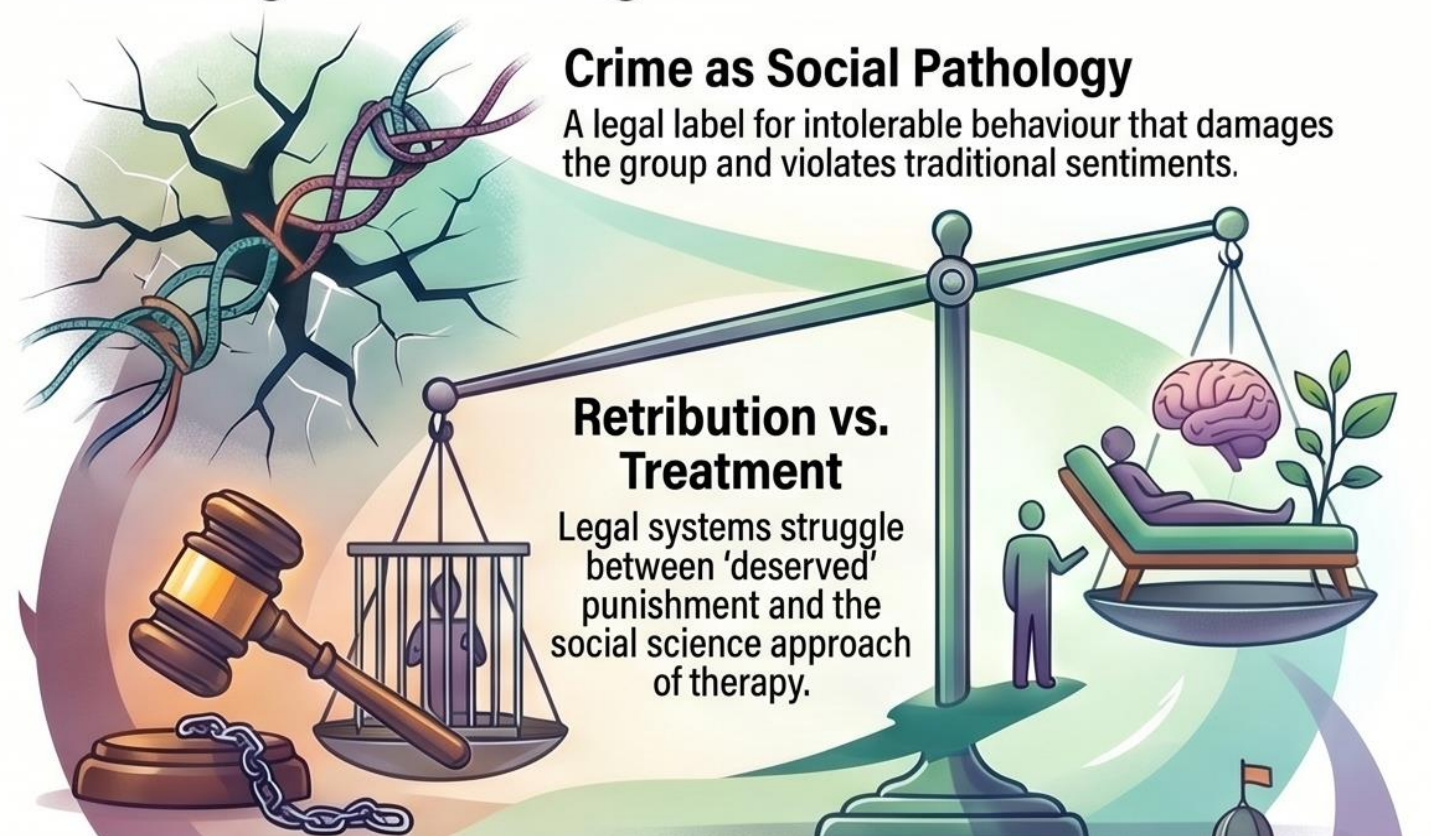
The Rise of Statutory Law

Beccaria (1764) argued for written laws so individuals could understand punishments before choosing to act.

Defining and Treating Crime

Crime as Social Pathology

A legal label for intolerable behaviour that damages the group and violates traditional sentiments.



Retribution vs. Treatment

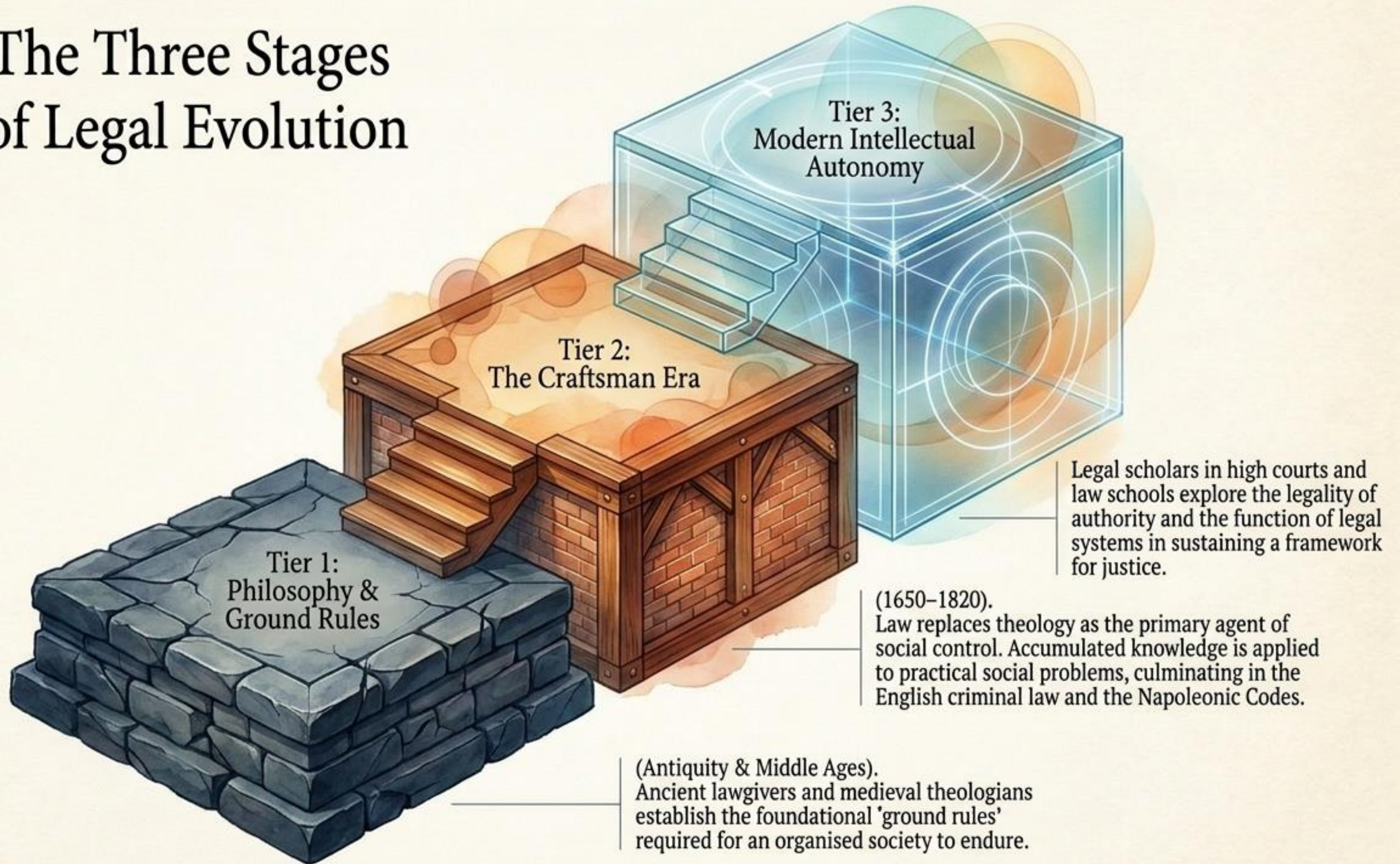
Legal systems struggle between 'deserved' punishment and the social science approach of therapy.



The Flexibility of Justice

Public policy and local customs often cause laws to be applied differently across jurisdictions.

The Three Stages of Legal Evolution



The Drive Toward Statutory Codification



2500–2300 B.C.:

Sumerian Code emerges as the first systematised written law.

1750 B.C.:

The Code of Hammurabi inscribed on an eight-foot pillar of black diorite.

529 A.D.:

Emperor Justinian I consolidates ancient and Roman law into the *Codex Constitutionum*, influencing European legal thought for a millennium.

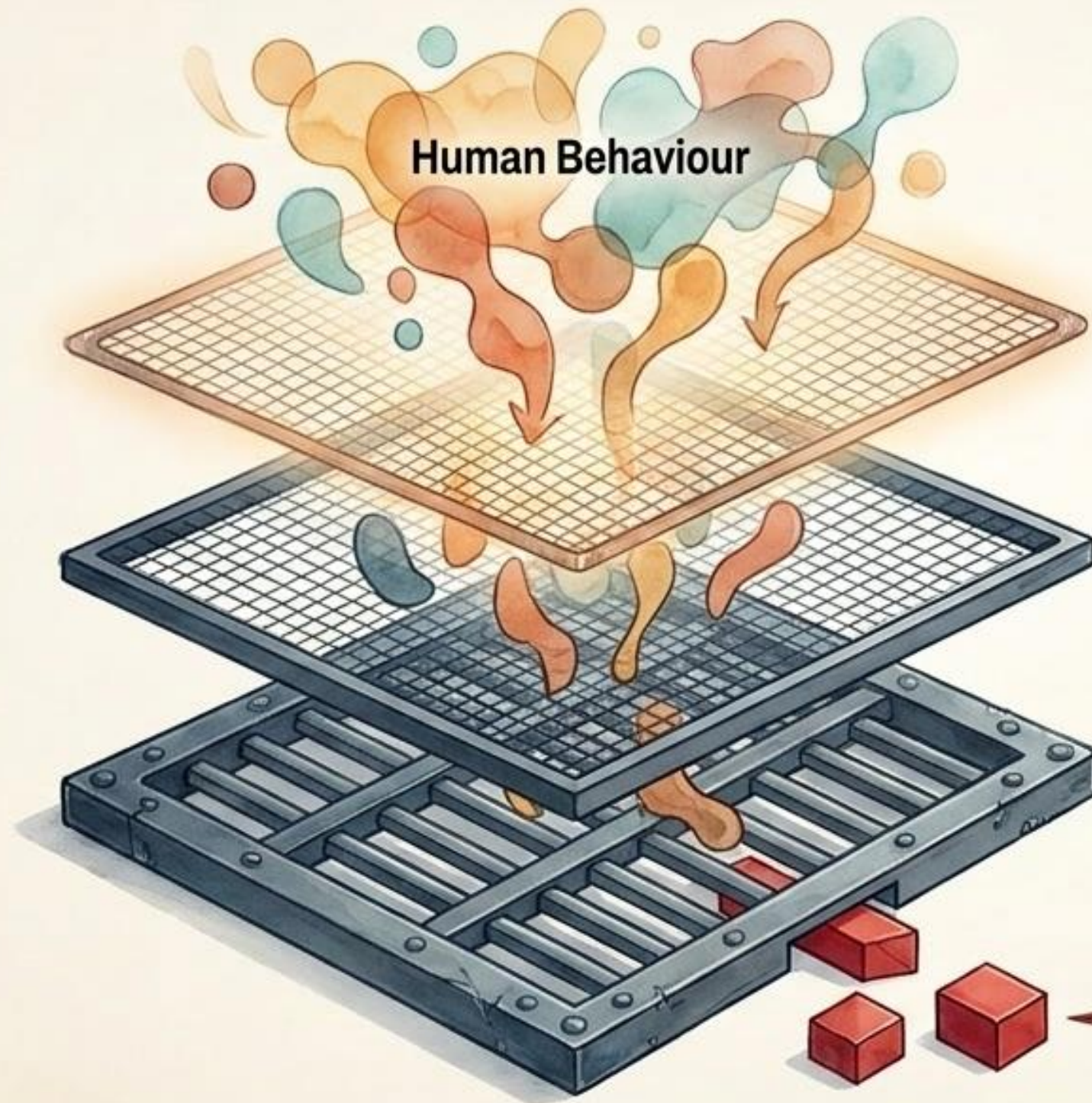
1764:

Cesare Beccaria publishes *Essay on Crimes and Punishment*, arguing that written statutory law is required to allow citizens a free choice and to prevent arbitrary judicial excesses.

1804:

The *Code Civil des Français* is proclaimed, marking the standardisation of modern public criminal law.

Crime as a Legal Artifact



Interpersonal Anticipation.

Social formation relies on anticipating others' behaviour (trust, customs, contracts).

Intolerable Behaviour.

Deviations that damage the group and disrupt the smooth functioning of society.

Social Authority Intervention.

The point at which society determines an individual is a danger warranting forceful intervention.

The Crime.

As defined by Brodsky, crime is not a behavioural entity but a "legal artifact"—a category that permits society's agents of social control to intervene in a citizen's private life.

The Cultural Relativity of Deviance



Labrador / Eskimo Communities

Historically, abandoning or killing elderly parents was expected when they became an economic liability or nonproductive, ensuring tribal survival.



Greco-Roman & Near East

Homosexuality was accepted as a standard part of the culture, contrasting sharply with subsequent Western criminalisation.



Equatorial Africa & The Ifugao

Patterns of defined crime vary immensely across African tribes, while the Ifugao in northern Luzon historically had no concept of crime at all.



The United States

The sanctity of the contract is held in paramount regard (influenced heavily by Chief Justice John Marshall), whereas other cultures view contracts as fluid, alterable operating procedures.

The Ideological Divide

The Legal Approach

Perspective: Backward-looking (relies on Precedent).

Core Philosophy: Assumes Free Will and Intent.

Objective: Provides stability, definitive judgements, and retributive justice.

Classification: Binary categorisation (Guilty vs. Innocent).

The Social Science Approach

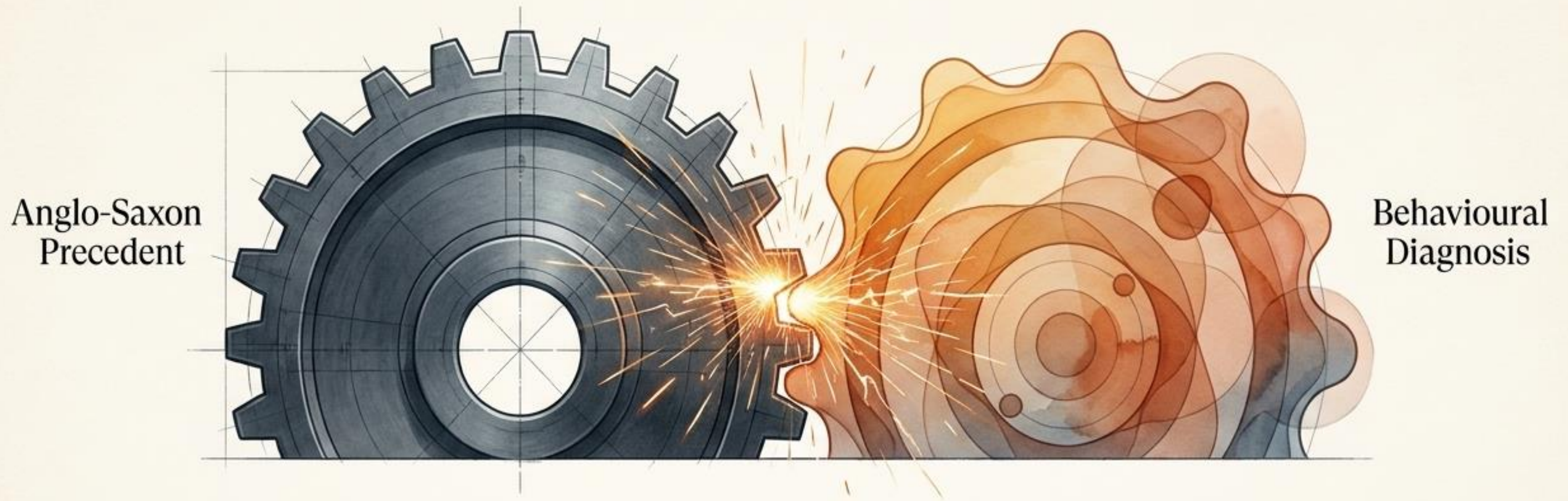
Perspective: Forward-looking (relies on Prediction).

Core Philosophy: Assumes Caused Behaviour.

Objective: Provides progress, diagnosis, and humanitarian treatment.

Classification: Rejects behavioural grouping by legal offence, viewing classification by 'crime' as nonproductive.

The Dilemma of Intent



The Legal View

Anglo-Saxon law is fundamentally built on the mentalistic concept of intent and free will.

The Scientific View

Behaviour is caused by a complex variety of factors, rendering the concept of simple legal intent incompatible with modern behavioural science.

The Compromise

Because the framework of the law is built on precedent designed to last for centuries, social scientists and psychiatrists must engage in "conceptual gymnastics," reinterpreting their diagnoses to fit the rigid legal structure of insanity or competency, or risk losing all effectiveness.

Case Study: Vanity Village, Alaska

In Athabascan Indian villages like Vanity, locals actively avoid the formal criminal justice system to keep their local social order intact.

Local Control (Functional Law)

- Drinking results in a \$50 fine or mandatory community wood-cutting.
- Pan games allowed only between 5:00 p.m. and midnight; profits fund dog races, then the community fund.

“We don’t like to bother state law. We will try to fix our trouble ourselves.”

State Control (Formal Law)

A third drinking offence exhausts local tolerance and triggers state law.



The Architecture of a Jury

The Premise

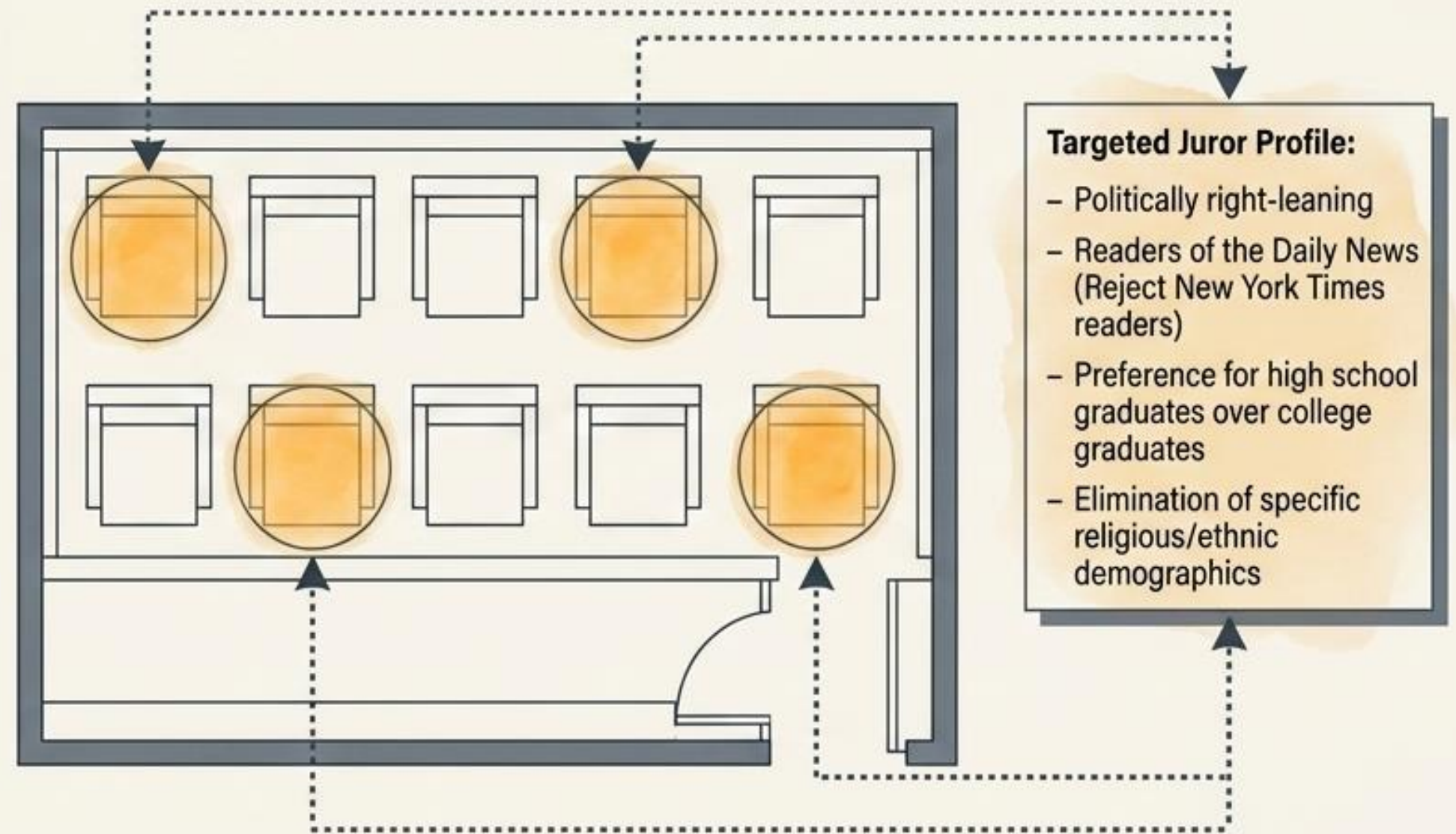
Social science is increasingly used for venue demography and measuring pretrial publicity to actively engineer legal outcomes.

The Case Study

In the 1974 Mitchell-Stans trial, Conceptual Dynamics, Inc. constructed a highly specific demographic profile through rigorous telephone surveys.

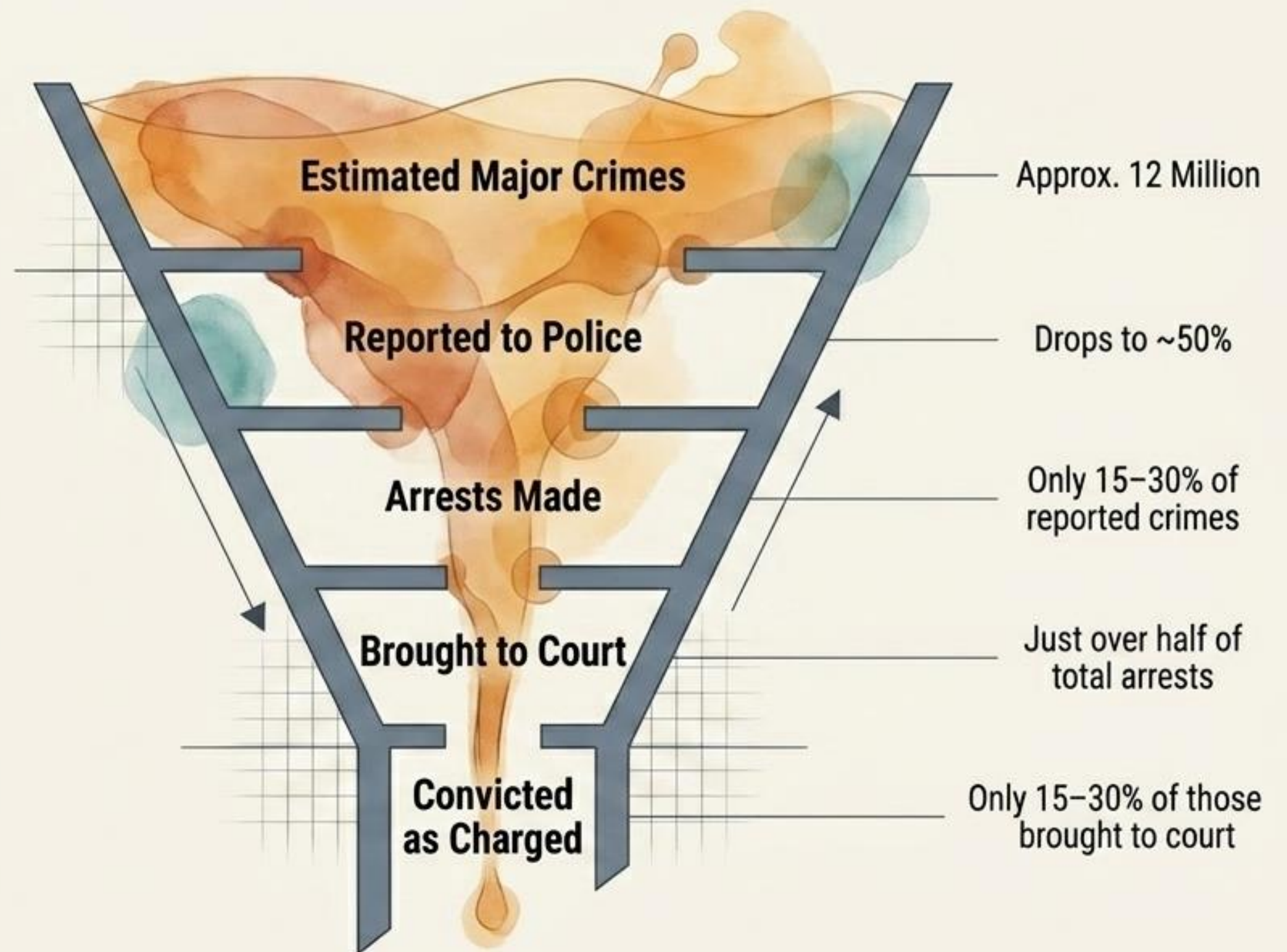
The Result

A 'brilliant' selection strategy highlighting the ethical debate over biased juries and the collision of predictive science with abstract justice.



The Illusion of Official Statistics

Official Statistics



Insight

The FBI's Uniform Crime Reports cautions against comparing communities because data reflects local policies, population stability, and investigative efficiency rather than pure behavioural truth.

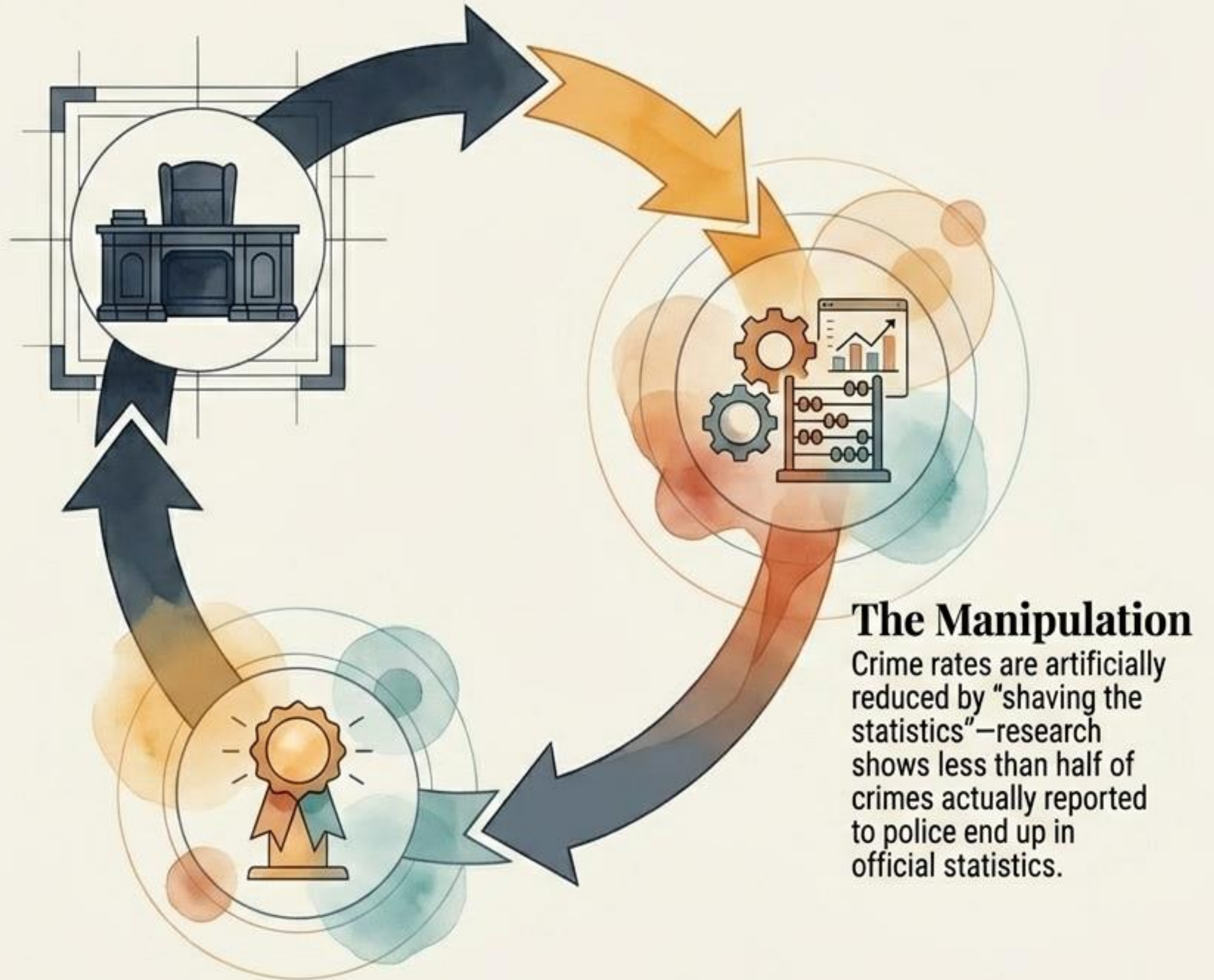
The Politicisation of Data

The Directive (December 1969)

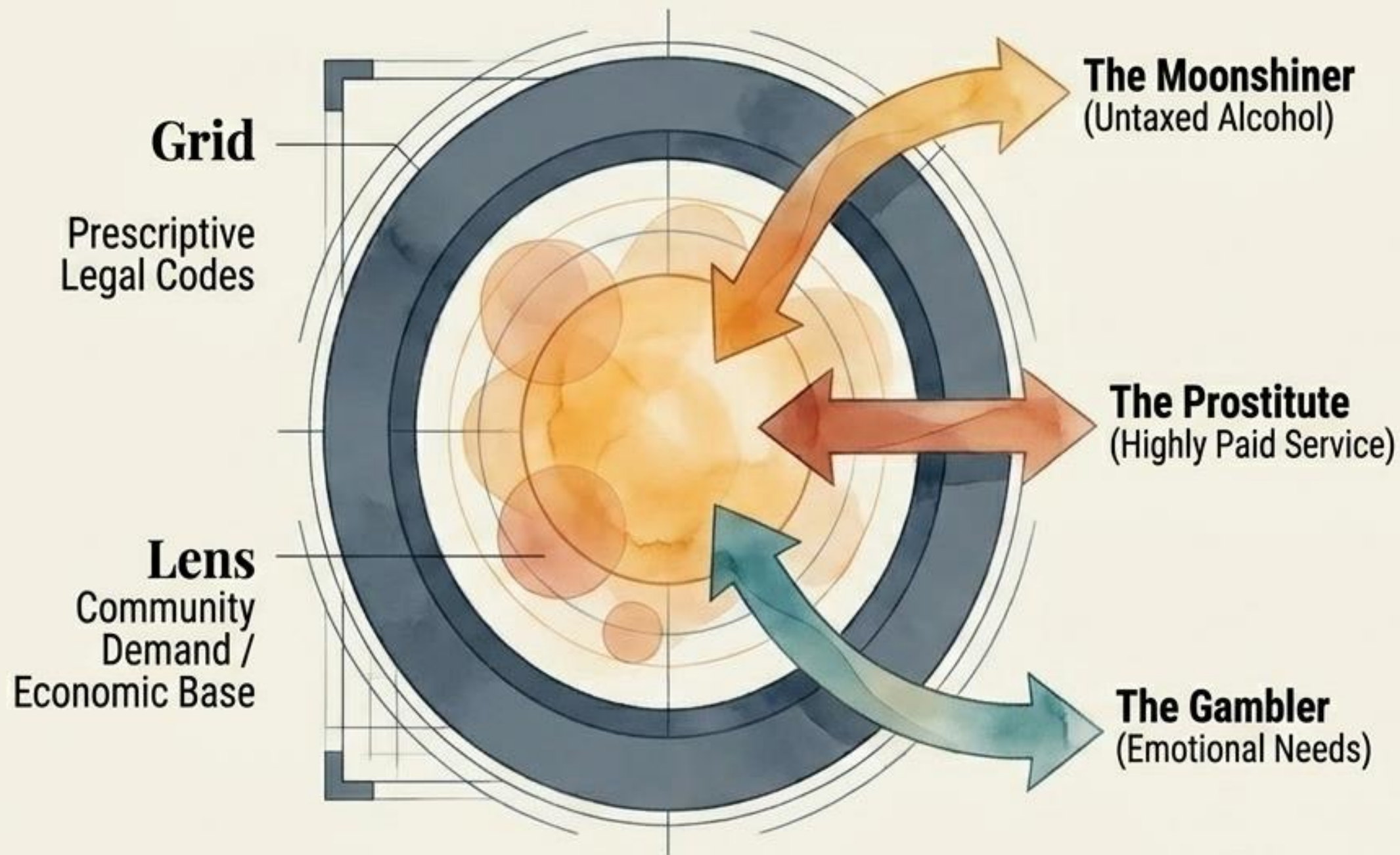
President Nixon threatens to replace D.C. Police Commissioner Jerry Wilson unless the crime rate is reduced.

The Illusion (Early 1974)

A celebration party is held at the White House to commend a nationwide statistical drop in crime, proving that agencies of social control often bend data to "make the boss look good" rather than reflect reality.



The Reality of Selective Enforcement



The Conflict

The manner in which crime is handled varies drastically based on local customs and public opinion. Prescriptive legal codes often contradict the structural reality and economic desires of a community.

The 'Dissociate' Offender

Individuals who adjust perfectly well within their immediate reference group (providing a demanded service) but technically violate the laws of the larger society. Their behaviours are strictly illegal, yet frequently permitted or protected in practice because they serve the economic or emotional base of the community.

The Ideological Battle Over Corrections

The Retributive Model

Views crime as a free choice between good and evil, demanding "deserved" and "just" punishment.

Championed by figures like J. Edgar Hoover, who dismissed scientific approaches as "cream-puff criminology."

The Legal Barrier

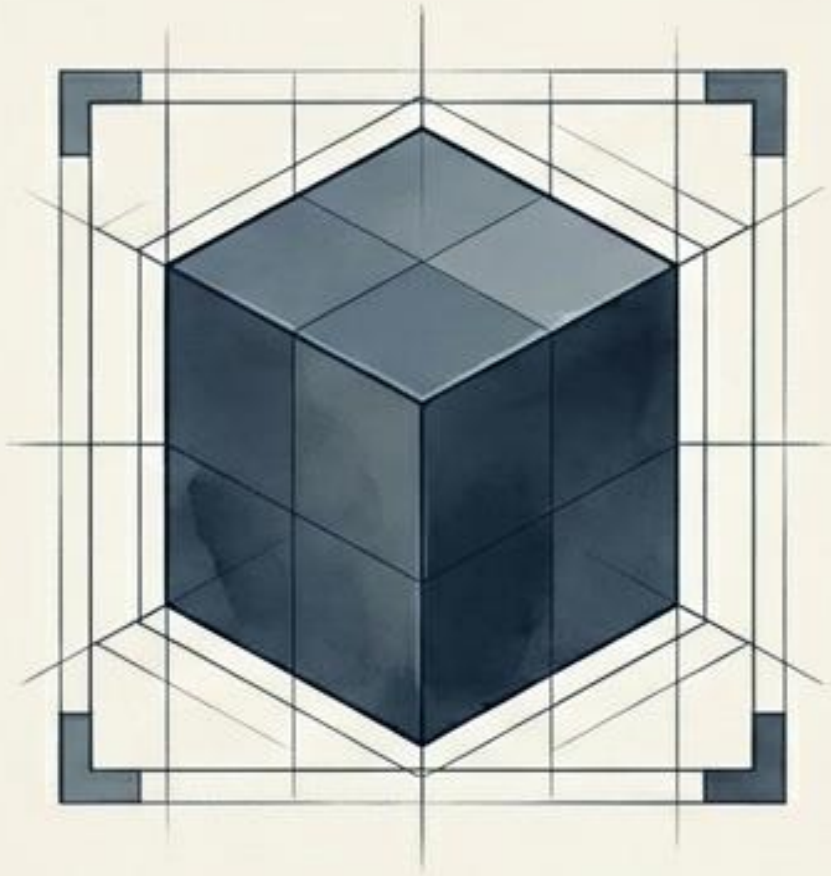
Treatment approaches face immense procedural hurdles regarding Eighth Amendment (cruel and unusual punishment) and Fourteenth Amendment (equal protection) rights.

The Humanitarian Model

Driven by social scientists who argue rigid sentences are counterproductive.

Prisons "institutionalise" people, leaving them dependent, apathetic, or rebellious.

The Integration Equation



Law (The Stabiliser)

Provides the necessary structure, precedent, and social control required to prevent anarchy and protect citizens.

+



Social Science (The Catalyst)

Provides advancing knowledge, predictive analytics, and an understanding of caused behaviour and cultural relativity.

=



The Synthesis

Neither discipline can adequately govern alone. Integrating the stability of the law with the progressive insight of scientific knowledge is the only framework capable of creating a society that is both dynamic and stable.