



CRIMINOLOGICAL INSIGHTS

BY DR. MRIDUL SRIVASTAVA

A visual synthesis of mid-century penal philosophy,
administration, and the making of the 'Renaissance Warden'.



The 1941 Correctional Paradigm

Deconstructing the Syllabus of the
United Provinces Jail Training School, Lucknow

A visual synthesis of mid-century penal philosophy, administration, and the making of the 'Renaissance Warden'.

The 1941 Blueprint for Correctional Excellence

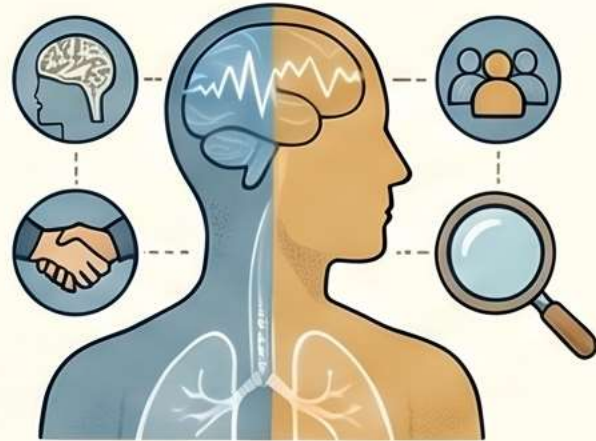
THEORETICAL & BEHAVIORAL FOUNDATIONS

From Retribution to Reformation

Supporting Detail: The curriculum focuses on the evolution of punitive measures toward rehabilitation and after-care.

Multidisciplinary "Man Analysis"

Supporting Detail: Training includes Psychology and Sociology to classify prisoners based on character and mental health.



Supporting Detail: Training includes Psychology and Sociology to classify prisoners based on character and mental health.

Training in Sociability



Evolution Timeline

Supporting Detail: A unique subject exploring human evolution, social instincts, and the psychology of leadership.



PROGRESSIVE CURRICULUM: LUCKNOW, 1941

Context Summary: This 1941 syllabus for the "Prison Administration and Correctional Work" course in Lucknow demonstrates a shift from punishment to a multidisciplinary, scientific approach for reform.

PRACTICAL ADMINISTRATION & VOCATIONAL SKILLS

Mastery of Prison Industries



Supporting Detail: Officers were trained in weaving, dyeing, bleaching, and large-scale agricultural management.

Prison Industries



Weaving (cotton/wool), Dyeing (indigo/online), and Bleaching.

Agricultural Management

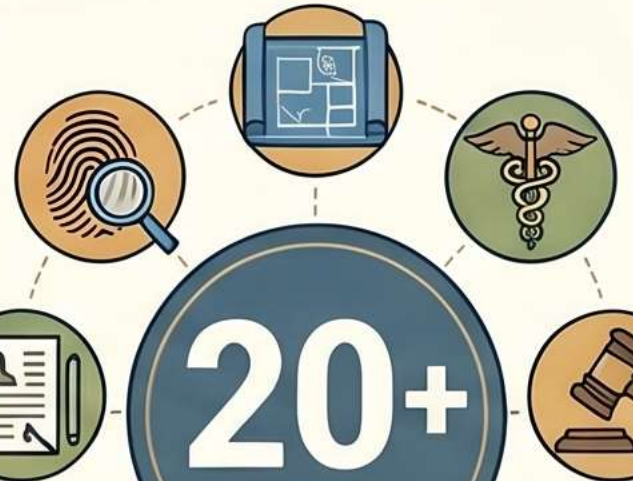


Soil science, irrigation, animal husbandry, and horticulture.

Civil Engineering



Building construction, sanitation, and earthquake proof design.



20+ Diverse Subjects

Supporting Detail: The course covers everything from Fingerprint Classification to Building Construction and Veterinary Science.

Legal & Forensic Expertise



Supporting Detail: Deep instruction in Criminal Law, the Indian Evidence Act, and scientific crime detection.

The syllabus demanded an unprecedented mastery of twenty distinct disciplines.

Theoretical Foundations

- Penology
- Criminology-cum-Sociology
- Psychology
- Training in Sociability

Administrative Machinery

- Prison Administration (Rules)
- Criminal & Penal Laws
- Finger Prints
- Psychiatry

The Prison Economy

- Accounts & Auditing
- Prison Industries (Weaving, Dyeing)
- Buildings
- Agriculture, Rural Economy

The Officer's Profile

- Personal & Public Hygiene
- First Aid
- Drill
- Use of Weapons
- Discipline

Penology instruction shifted focus from historical annihilation to scientific reformation.

The Evolution of Punishment Matrix		
	Historical / Primitive Era	1941 "Modern" Era
Primary Goal	Retribution & Deterrence	Reformation & Reorientation
Methods Employed	Annihilation, execution, maiming, transportation	Segregational classification, Job analysis, Parole, Probation
Institutional Types	Exile and lock-ups	Borstals, Open Camps, Penal Farms



Trainees were taught to evaluate "solitary confinement vs. association confinement" through a psychological lens, abandoning purely punitive measures.

A rigorous diagnostic framework sought to isolate the root causes of criminality.

The Anatomy of Crime Matrix

Biological & Hereditary Factors	Environmental & Economic Factors	Social & Psychological Crises
<ul style="list-style-type: none">✓ • Mendalism and chromosomes✓ • Native traits and physical types (Kretschmer's Typology)✓ • Mental deficiency✓ • The 'physiognomy of crime'	<ul style="list-style-type: none">✓ • Poverty and slum area populations✓ • Extreme economic contrasts✓ • The "desire to escape" from unfavourable surroundings	<ul style="list-style-type: none">✓ • Infantile and pubertal crises✓ • Inner disharmony and religious conflicts✓ • Influence of sibling relations✓ • The "unconscious motives of crime"



Officers were trained to view inmate behaviour as an evolutionary continuum

The Sociability Spectrum

Primordial Origins

- Man's affiliation to Primates, arboreal apprenticeship, descent from the tree

Neurological Ascent

- Evolution of the vertebrate brain, survival value of society, foundation of kin-sympathy

Instinctual Forces

- Hunger, sex, the antagonism between sexual and social sentiments, 'instinctive behaviour in man'

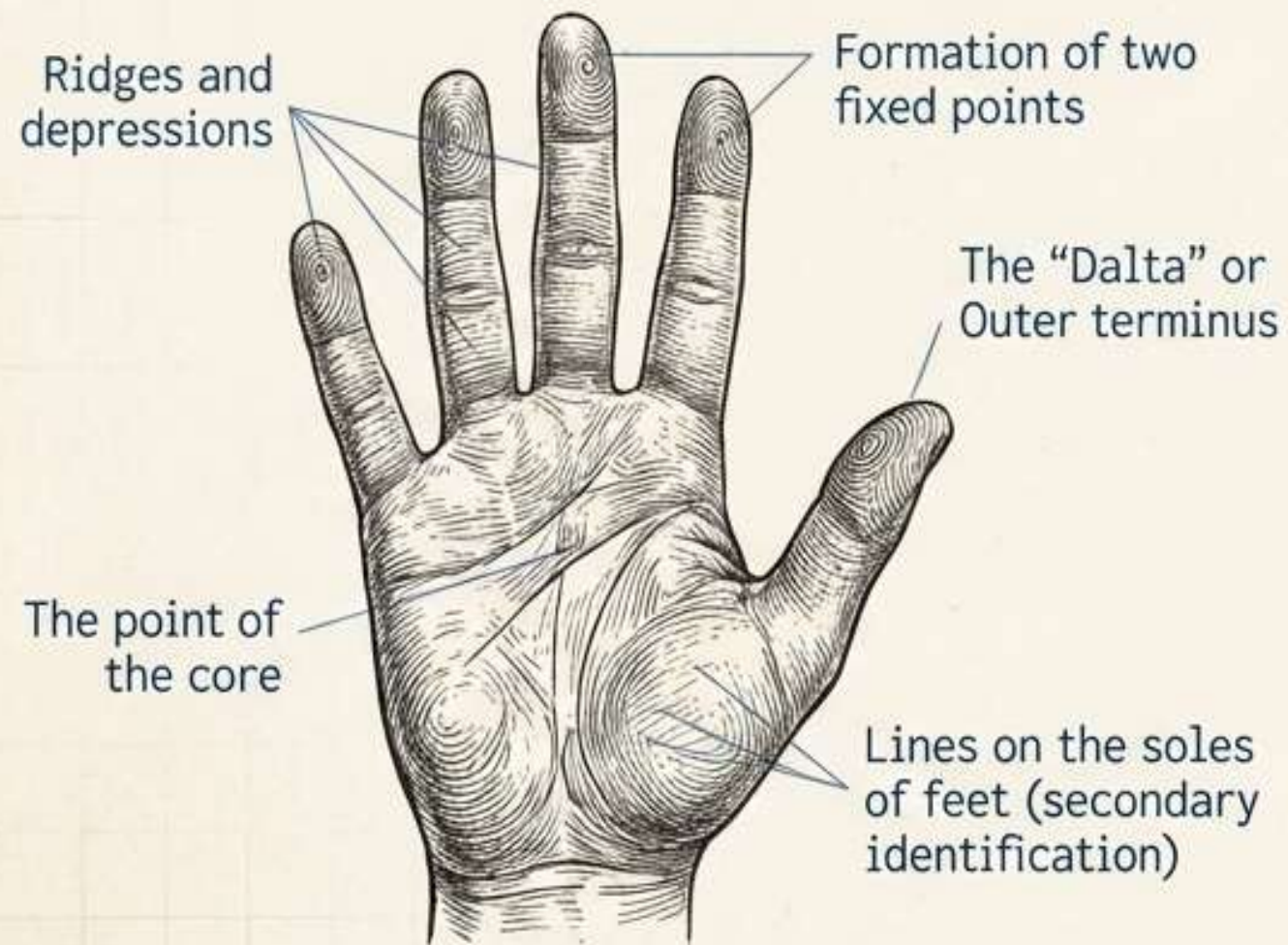
Inter-Personal Complexity

- Triangular neurosis, the auxiliary ego, mental catharsis, and the psychodrama.

Trainees were taught to view social attraction dynamically—as a “system of energy operating within a field”.

Emerging biometric sciences and strict courtroom protocols defined the administrative machinery.

The Identification Engine



Four Essential Requirements for a Crown Witness

<input type="checkbox"/>	1. Thorough knowledge of the case.
<input type="checkbox"/>	2. Personal appearance (steadiness and firmness without feeling nervousness).
<input type="checkbox"/>	3. Truthfulness.
<input type="checkbox"/>	4. Courtesy to the court and politeness towards counsels.

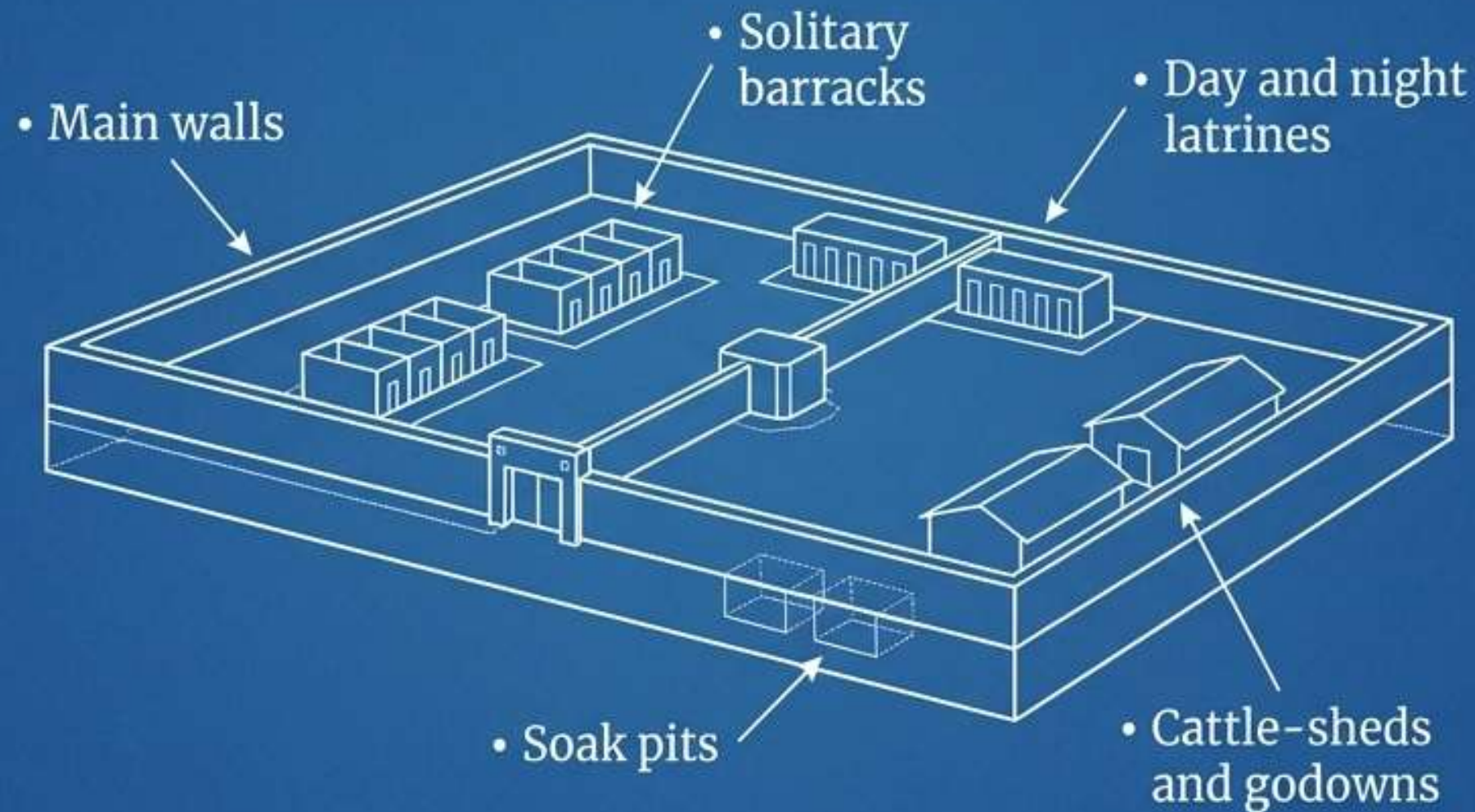


Prison buildings were understood as engineered systems requiring precise material mastery.

Material Science:

- Mortars: Cement, Lime, Mud
- Roofing: Jack arch, C.I. sheet, Allahabad tile, Thatch roof
- Plasters: Kankar lime, White lime

The Architecture of Confinement

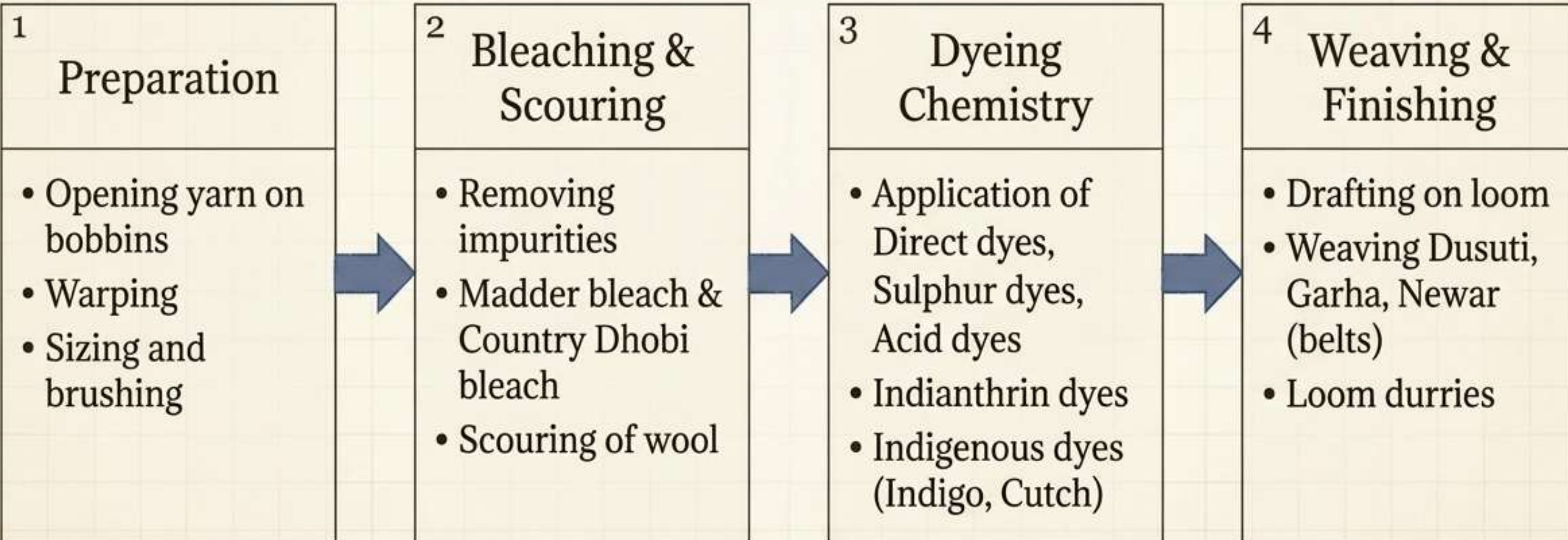


Modern Building Directives:

Instruction covered advanced techniques including earthquake-proofing, fire-proofing, and strict "protection against rats and ants".

The facility functioned as an industrial powerhouse driven by convict labour.

Ecosystem of Labour: Textiles



Wardens were required to act as master agronomists and veterinary surgeons.

Agronomy

- Mastery of soil types (calcareous, alkaline).
- Tillage and dry farming techniques.
- Crop rotation for cereals, fibres (patsan, jute), and fodder (lucerne, berseem).
- Manufacturing compost and green manure.

Veterinary Science

- Designing detailed fodder schemes.
- Diagnosing contagious diseases (haemorrhagic septicaemia, rinderpest, anthrax).
- Treating simple ailments (tympenites).
- The principles and practice of castration.

Maintaining the micro-society required an aggressive, systematic approach to public hygiene.

Alimentary Threats	Respiratory Threats
<ul style="list-style-type: none">● Cholera● Dysentery● Typhoid fever● Parasitic worms	<ul style="list-style-type: none">● Tuberculosis● Pneumonia● Cerebro-spinal fever
Contact & Inoculative Threats	Environmental Defences
<ul style="list-style-type: none">● Trachoma● Scabies● Venereal diseases; Relapsing fever, Plague● Rabies● Tetanus	<ul style="list-style-type: none">● Caloric requirements for a 'Balanced Diet', purification of water, disposal of dead bodies, and strict eradication of 'vermin' (rats, lice, stable flies)



Graduation required an exhaustive, 2000-word psychological and historical self-accounting.

ANATOMY OF AN OFFICER

Family History

'Degree of affection towards each sibling indicating their age and order of birth.'

Intellectual Life

'How you have been spending your leisure and free time.'



Marital Dynamics

'Efforts you have made to improve your family and social status.'

Future Utility

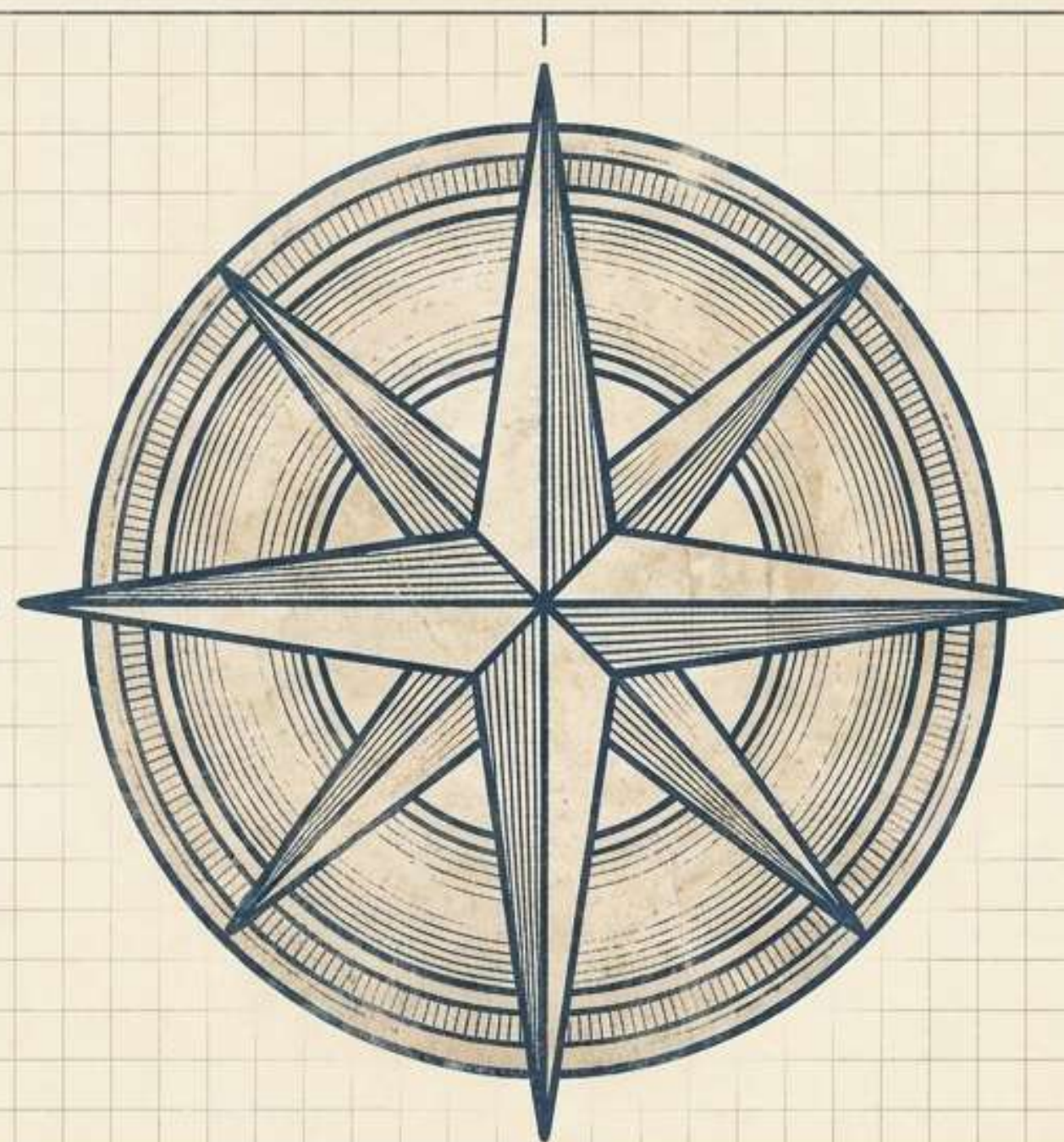
'Explain in some detail the plan you propose to follow for your future work at the Jail.'



The curriculum was designed to forge a 'Renaissance Warden'.

The Psychologist

Diagnosing inner disharmony and managing triangular neurosis.



The Magistrate

Mastering penal codes, evidence acts, and parole mechanics.

The Industrialist

Orchestrating complex weaving, dyeing, and agricultural ecosystems.

The Architect

Engineering sanitary, secure, and self-sustaining physical environments.

The 1941 syllabus reveals a mid-century vision of the prison not merely as a place of holding, but as a complex, self-sustaining micro-society requiring total administrative mastery.

