

# The Architecture of Criminal Careers

Trajectories, Typologies,  
and Institutional Pressures.

A clinical and sociological synthesis of  
offender behaviour and the systemic friction  
of the criminal justice apparatus.

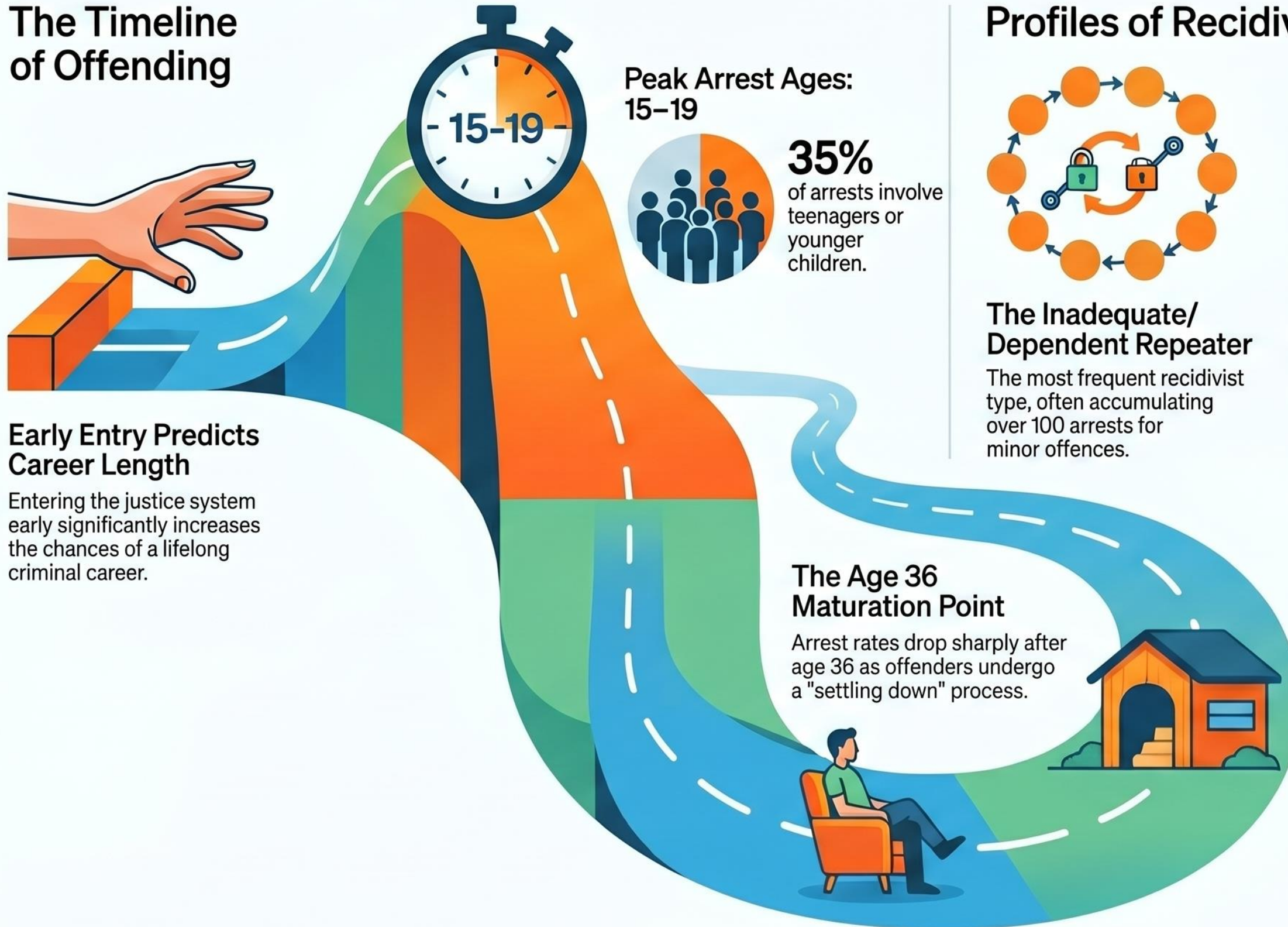


**CRIMINOLOGICAL  
INSIGHTS**

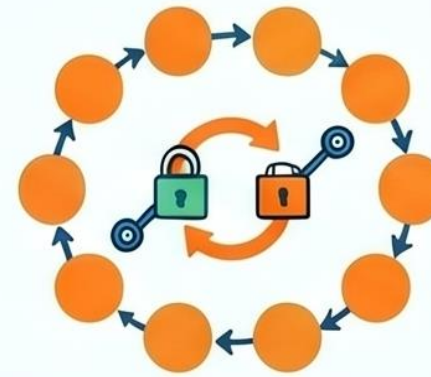
BY  
DR. MRIDUL SRIVASTAVA

# The Lifespan of Crime: Understanding Criminal Career Patterns

## The Timeline of Offending



## Profiles of Recidivism



### The Inadequate/Dependent Repeater

The most frequent recidivist type, often accumulating over 100 arrests for minor offences.



### Property Crime as a Livelihood

Career criminals are primarily property offenders who view crime as their skilled craft.



### The 'Prisonization' Effect

Prison environments can intensify problems, creating an "institutionalised" apathy that hinders rehabilitation.

## High Recidivism Tendency for Specific Crimes



Age 10                      20s                      30s                      40s                      50s                      Age 60+

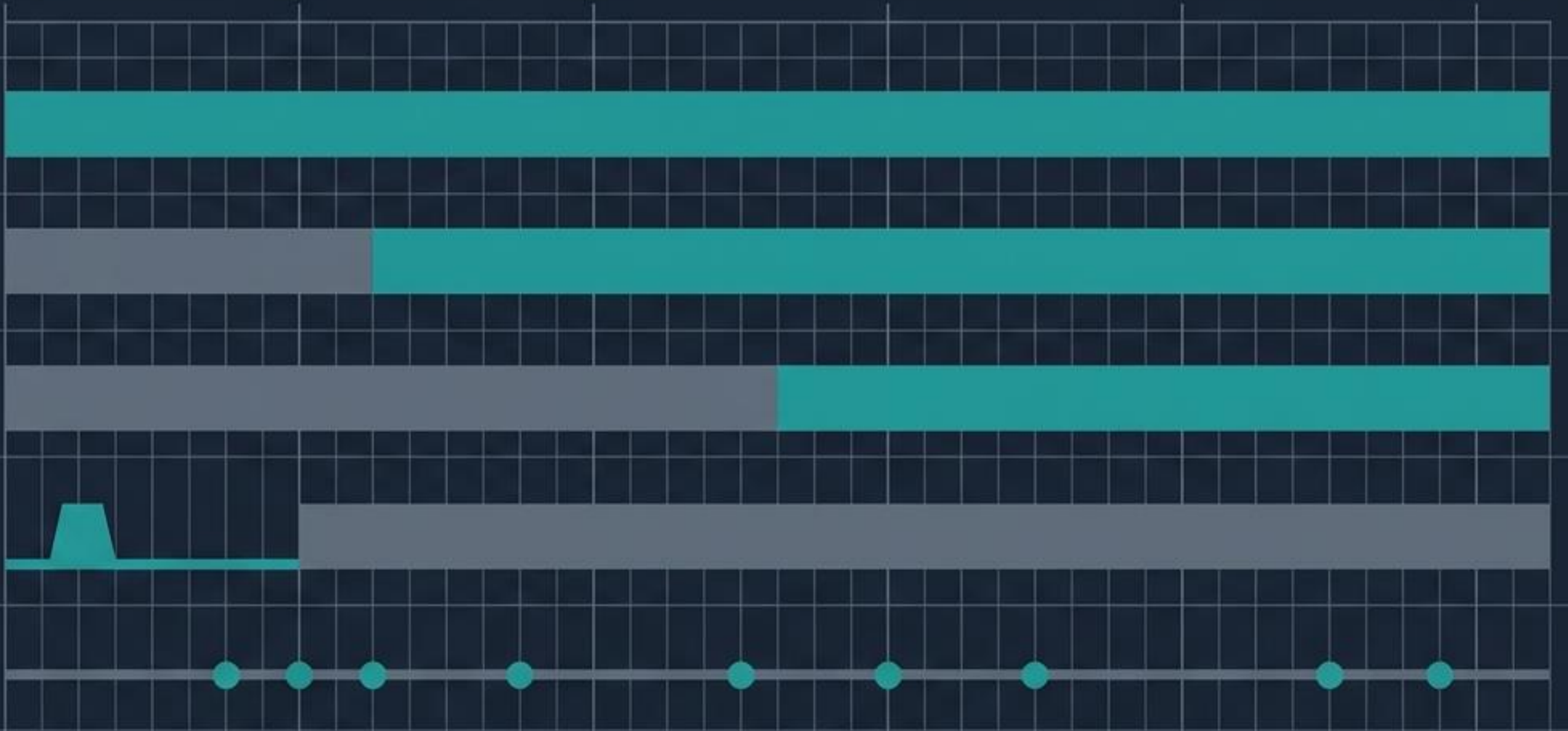
1. Lifelong

2. Young Adult Starter

3. Latecomer

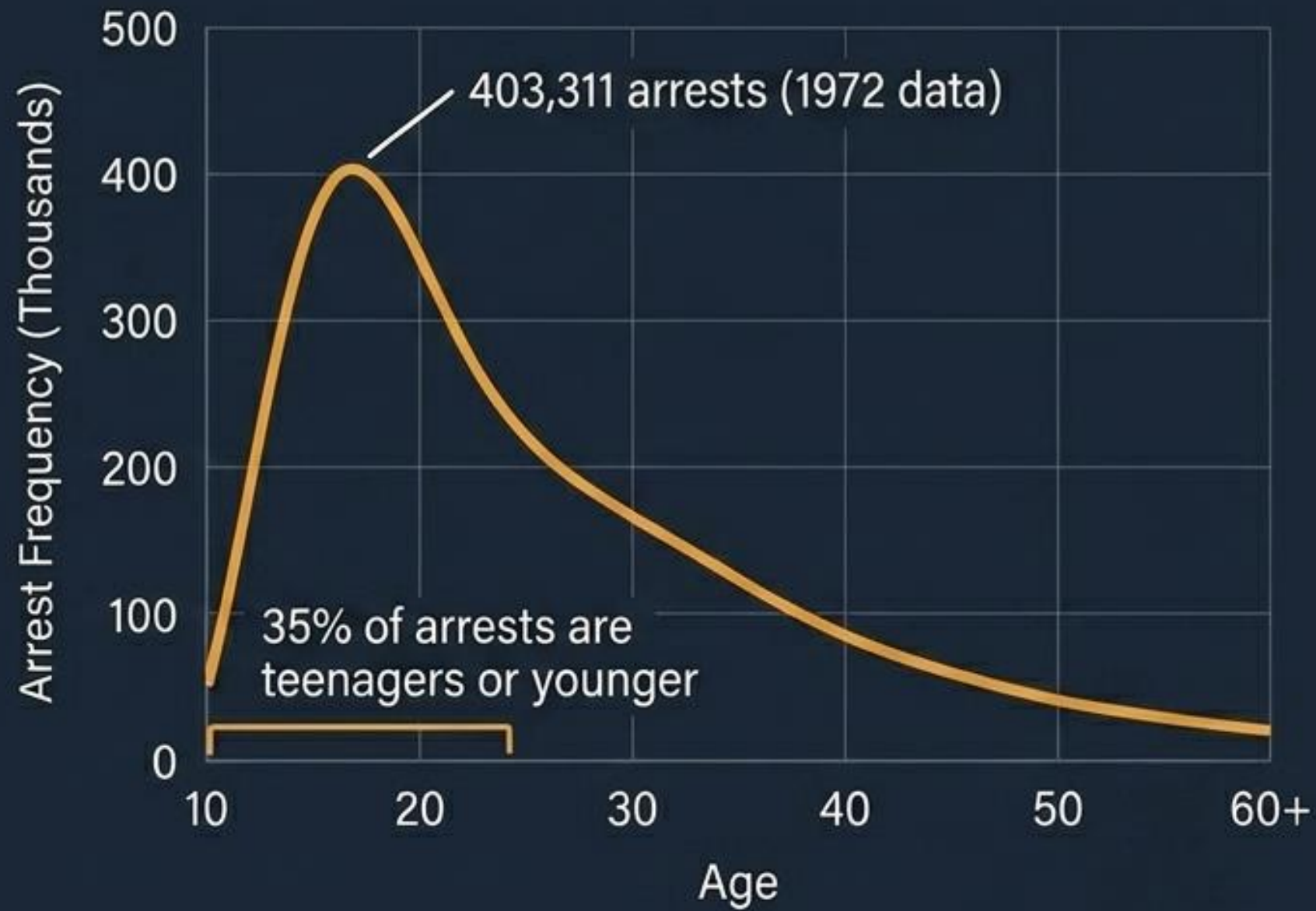
4. Adolescent-Only

5. The Occasional

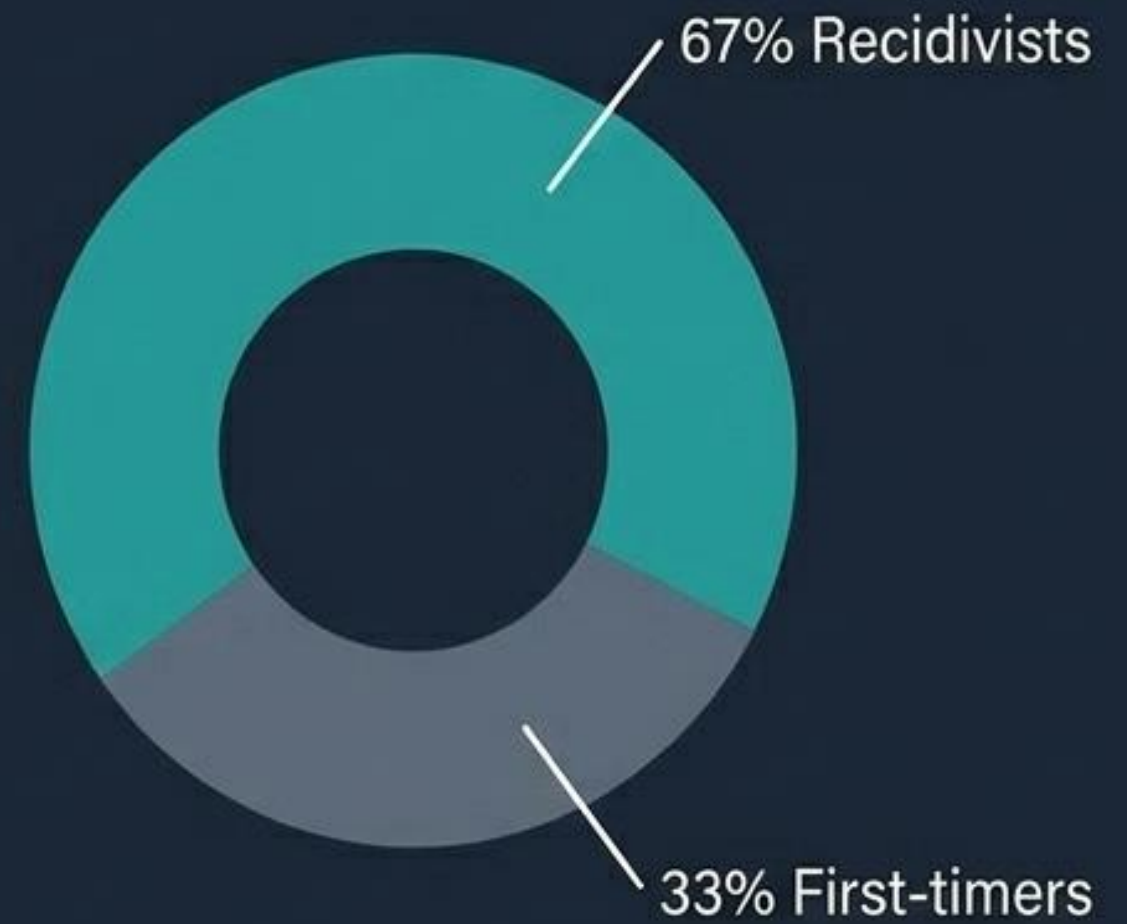


Intensity and duration are the most productive metrics for classification. Much of this behaviour is stereotyped habit—a 'readiness' to react to stress in particular ways.

### Arrest Frequency by Age



### Prison Population Makeup

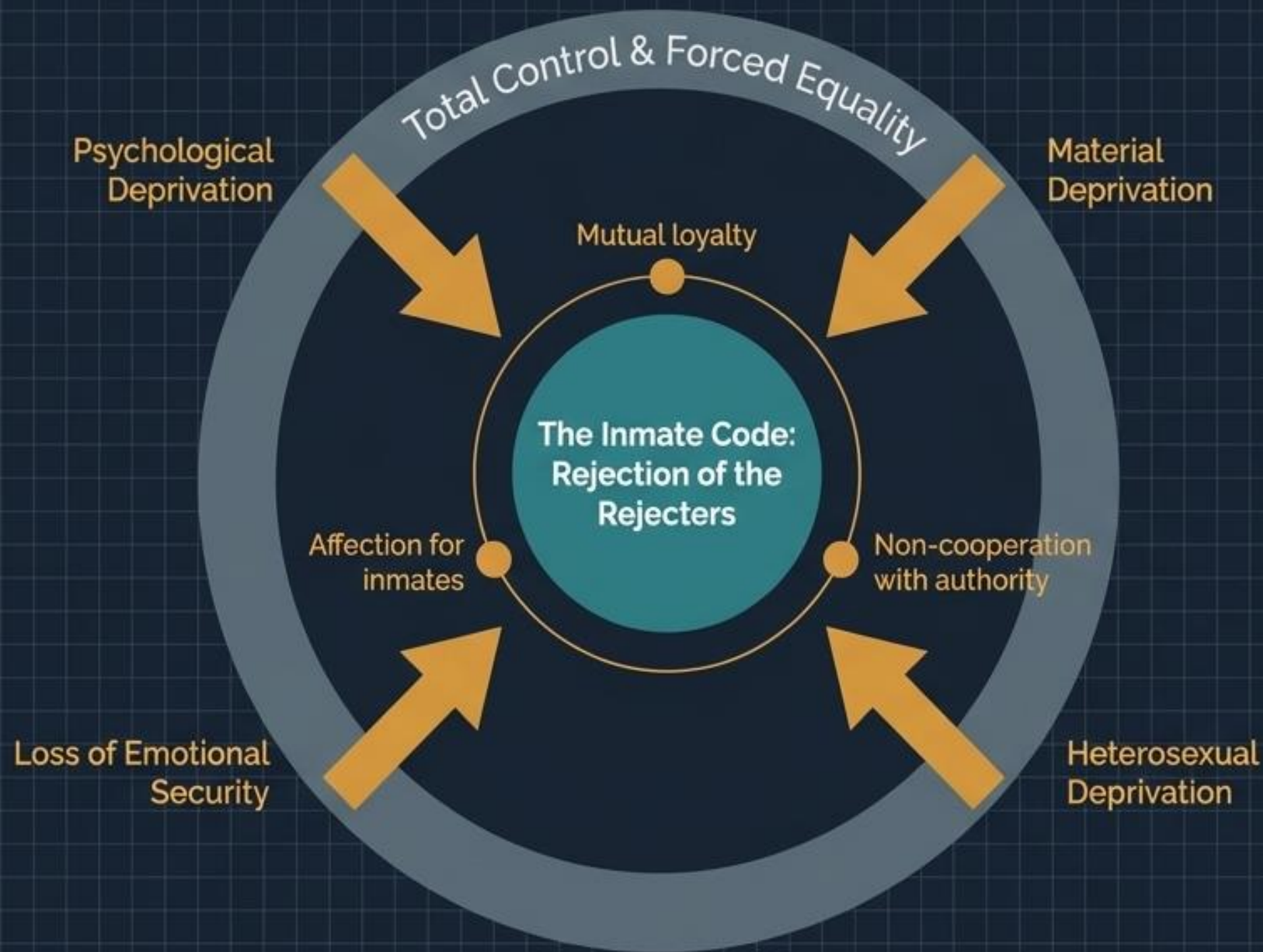


The Recidivism Paradox: While two-thirds of prison admissions are recidivists, this group is a small, persistent minority with hardcore socialisation problems. The earlier a person enters the justice system, the greater the statistical probability they will remain in it.

# Profiling the Persistent Minority

	The Inadequate / Dependent	The Dyssocial / Subcultural	The Compulsive	The Impulsive
Psychological Driver	Incipient simple schizophrenia or alcoholism.	Group conformity / business profit.	'Adolescent recapitulate' / chronic neurosis.	Psychopathic/sociop- athic; absence of anxiety.
Relationship to Society	Known to local jailers, protected by police for info.	Integrated within a deviant subculture.	Trapped in regressive, substitute behaviours.	Total disregard for societal norms.
Typical Offences	Vagrancy, public intoxication, petty larceny.	Bootlegging, prostitution, gambling, narcotics.	Repetitive execution of a single specific crime.	Unpredictable variety of property and assaultive offences.

# The Ecology of Prison Pressures



"Prison has taken away my sense of responsibility."  
- Edwin L. Addington

Inmates who cooperate with officials face severe psychological punishment ("freezing out") or physical violence.

# The Professional Lens

## Predisposing Causes



Backed by academics (e.g., Healy, Shaw, Gluecks).

# The Offender Lens

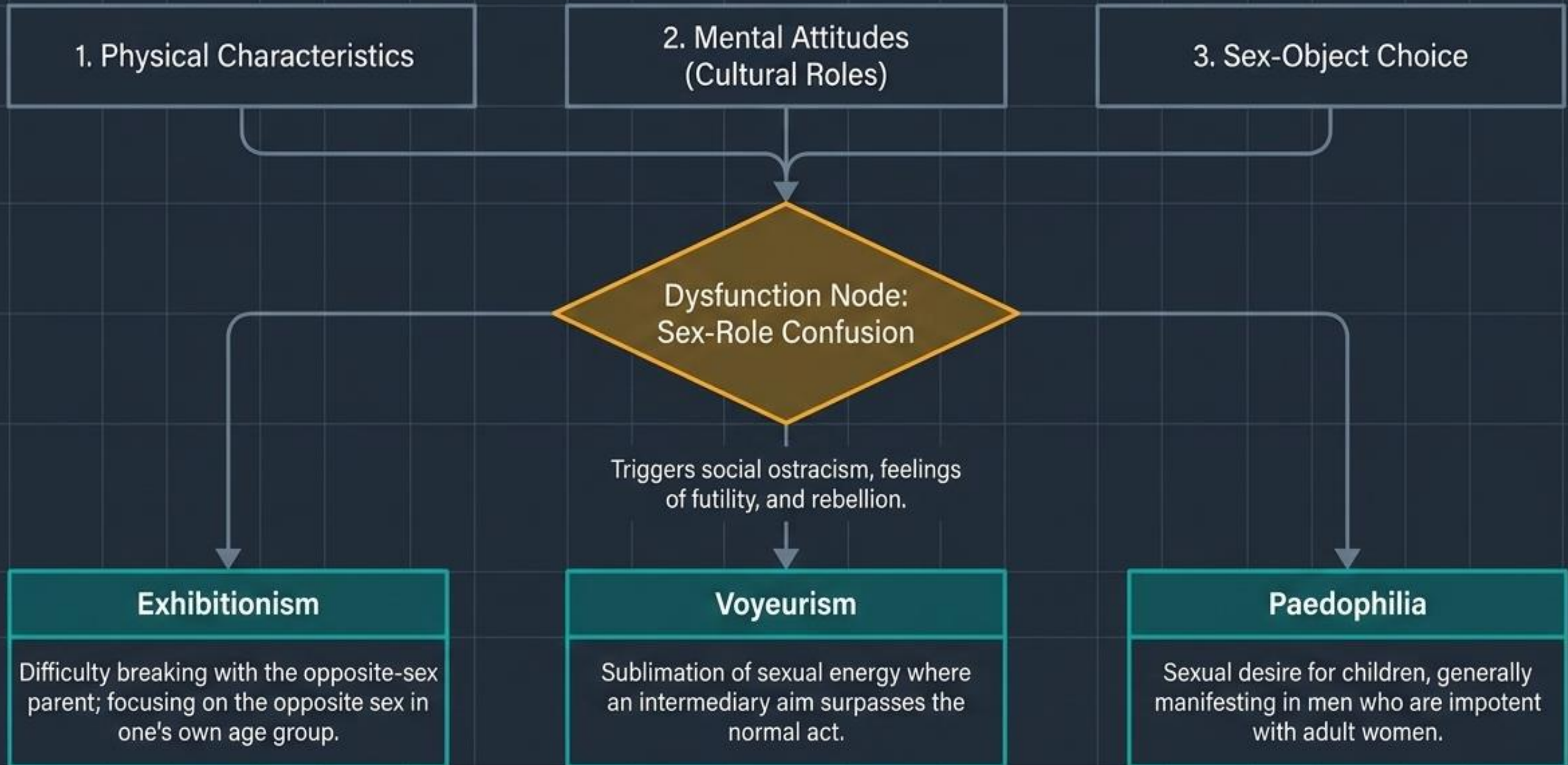
## Precipitating Causes



Backed by autobiographical accounts (e.g., Runyon, Nelson).

This fundamental divergence in perception frequently shatters communication between justice practitioners and offenders. Inmates estimate their behaviour is "97 percent the result of environment," whereas professionals search for deep-seated predisposing pathology.

# Psychosexual Development and Deviance



# The Roots of Homosexuality in the Justice System

## Biological

Innate physiological pressures diverging from the normative baseline.

## Cultural

Historical and societal precedents (e.g., ancient Greece).

## Clinical Deep-Dive: Women's Institutions

Situational homosexuality is highly prevalent in women's prisons as a familial substitute to combat profound loss of identity and loneliness.

## Psychological

Compensatory behaviour (e.g., a male raised by an aunt to replace his deceased mother).

## Situational

Environmentally forced adaptation, exclusively prevalent in unisexual prison settings.

---

*I'd never been with a woman before... they held me against the wall and burned my breasts with cigarettes... so I let them do what they wanted.*

## Sexual Use of Sex

Narcissistic expression

Reduction of tension

Reproduction

## Non-Sexual Use of Sex

### Forcible Rape

**Forcible rape is not caused by sexual deprivation. It is a crime of violence.**

- Aggression, hostility, release of pent-up anger, assertion of power due to inability to achieve masculine pride through normal avenues.

**Offender Psychology:** To the rapist, the victim is only secondarily a sex object. Age or appearance is irrelevant. As understood within the system:  
"A twenty-dollar bill is cheaper than a twenty-year sentence."

# The Systemic Challenge of Sex Reassignment



## Step 1: Psychiatric Diagnostics

Assessing psychological transition capacity.



## Step 2: Hormonal Therapy & Electrolysis



**Institutional Friction Point:** The physical body begins to change while legally and structurally bound to the original gender's facility.



## Step 3: Social & Vocational Rehabilitation

A two-year acclimatisation period.



## Step 4: Irreversible Surgery

Removal and reconstruction of genitalia.

### Case Study: Administrative Chaos

Details an inmate progressing through hormonal treatment (developing breasts, removing beard) while maintaining male genitalia.

Placed in a men's prison



Temporarily released to a midwestern city for surgery



Subsequently returned to a women's unit as an administrative puzzle.

# The Architecture of Aggression

## Instigation

Innate instincts, aggressive environments, frustration, social learning.

—

## Internal Inhibitions

Guilt, fear of punishment, environmental reaction, positive rewards for non-aggression (social status).

×

## Stimulus Factors

Immediate environmental catalysts that facilitate or impede the act.

**Dangerousness** is not a unidimensional phenomenon. Violence occurs when the instigation to aggression mathematically overwhelms internal inhibitions, catalysed by **immediate situational stimuli**.

# Diagnosing the 'Walking Bomb'



Measuring Overcontrolled Hostility (O-H). High scores indicate individuals who suppress anger until catastrophic release.



**Projective Tests:** Capable of bypassing conscious defences to identify infantile aggression and repressed hostility in the presence of anxiety.

## Diagnostic Insight Panel

### The Danger of Misinterpreting Depression

Depression is often repressed hostility absorbing aggressive action. It acts as a **temporary substitute for dangerous behaviour**, frequently culminating in suicide rather than homicide. Identifying the 'walking bomb' requires separating genuine compliance from overcontrolled, repressed rage.

## Case Study in Systemic Failure: Carl Panzram (1891-1930)

- Age 12:** Sent to Red Wing Training School for burglary. Born to hard-working parents.
- Adolescence:** Subjected to starvation, severe physical beatings, and sexual abuse by the state system.
- Adulthood:** Emerged as a loner operating outside organised crime, becoming America's most dangerous criminal.

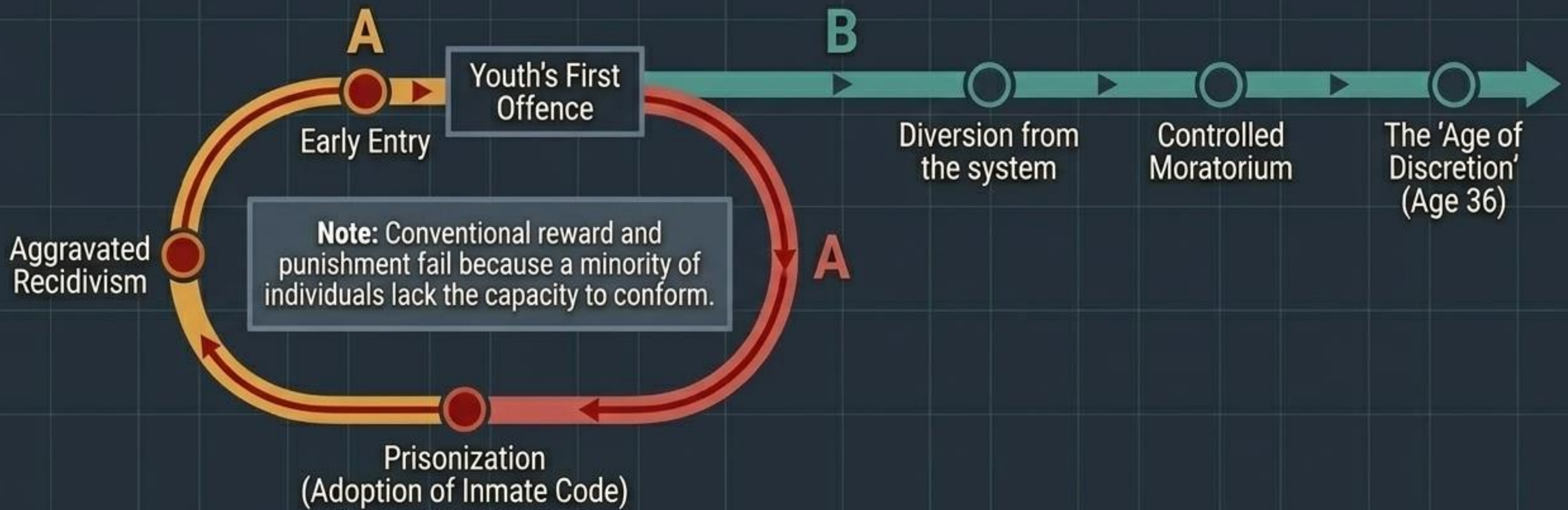
### The Systemic Autopsy

*"I had been taught by Christians how to be a hypocrite... I had learned that a boy's penis could be used for something besides to urinate with. I had learned a hell of a lot from my expert instructors, furnished to me free of charge by society."*

### The Result

**Rob 'em all, rape 'em all, kill 'em all.**

# SYNTHESIS: The Maturation Phenomenon vs. The Penal Loop



## Core Insight Box

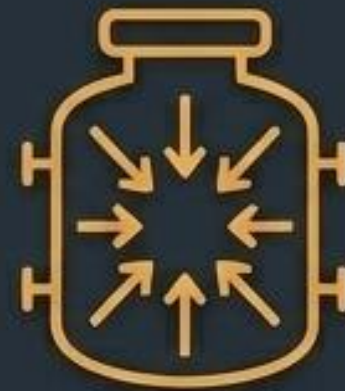
Based on Glueck's research: The passing of years is the most effective rehabilitative agent. Criminal behaviour reliably and sharply drops off around age 36. Therefore, the system must provide a controlled moratorium for emotional maturation, rather than blind punishment which only aggravates recidivism.

# Conclusions & Strategic Takeaways



## 1. Aetiology is found in the Pattern

Single offences tell us little. The true nature of criminal behaviour is revealed only by plotting the intensity and duration of the career. Early entry virtually guarantees long-term systemic entanglement.



## 2. Institutions are Catalysts, Not Cures

Prisons operate as ecological pressure cookers. Forced deprivation and arbitrary control individuals of responsibility, forcing the adoption of a hostile, anti-social inmate code simply to survive.



## 3. Time is the Ultimate Interdiction

The majority of persistent offending is driven by delayed emotional maturation, which naturally resolves around age 36. Effective justice requires shifting focus from aggravating penal loops to designing controlled environments that allow this maturation to safely occur.