

# CIRCULAR.

No. 6 of 1895.

From  
THE INSPR. GENL OF PRISONS,  
*North-Western Provinces & Oudh.*

To  
ALL SUPERINTENDENTS  
*of Jails*

*N. W. P & Oudh.*

Dated Lucknow;

The 19 June 1895. }

---

## SUBJECT

Revised forms of Monthly Returns Nos 7 and 8

Inspector-General has the honor to forward herewith 6 copies of revised forms of Monthly Returns Nos: 7 & 8, which should be adopted from the commencement of the current calendar year (1895).

2. The form of Monthly Return No: 7 prescribed in circular Memo No: 4 dated the 14th January 1894, should be considered as cancelled.

3. Returns for January, February, March, April, and May, 1895 should be carefully prepared in the revised forms and submitted to this office at an early date.

GEOFFREY, C. HALL,

F. R. O. S.,

SURGRON LT: COLONEL.

*Offy: Inspector-General of Prisons,  
North-Western Provinces & Oudh.*

**No. 7**

Statement Showing the mortality among the Convicts in the \_\_\_\_\_ Jail at \_\_\_\_\_  
for the month of \_\_\_\_\_ according to the length of original sentences.

1	2		3		4		5		6		7	
	Not exceeding six months.		Above six months and not exceeding 1 year.		Above 1 year and not exceeding 3 years.		Above 3 years and not exceeding 7 years.		Above 7 years.		Total.	
Sex.	Number on last day of the month.	Deaths.	Number on last day of the month.	Deaths.	Number on last day of the month.	Deaths.	Number on last day of the month.	Deaths.	Number on last day of the month.	Deaths.	Number on last day of the month.	Deaths.
Male,												
Female,												
Total,												

The Jail Office.  
189

Superintendent,


**No. 8**

Statement showing the mortality among the convicts in the Jail at \_\_\_\_\_ for the month  
of \_\_\_\_\_ 189 - according to the length of time passed in Jail


1	2		3		4		5		6		7		8	
	Not exceeding six months in Jail.		Above six months and not exceeding one year.		Above one year and not exceeding two years.		Above two years and not exceeding three years.		Above three years and not exceeding seven years.		Above seven years.		Total.	
Sex.	Number on last day of the month.	Deaths.	Number on last day of the month.	Deaths.	Number on last day of the month.	Deaths.	Number on last day of the month.	Deaths.	Number on last day of the month.	Deaths.	Number on last day of the month.	Deaths.	Number on last day of the month.	Deaths.
Male,														
Female,														
Total.														

In charge of Jail,

# 1895 Prison Reform: Standardising Mortality Reporting



**Issued by Surgeon Lt. Colonel Geoffrey C. Hall.**  
From the Office of the Inspector-General of Prisons, Lucknow, June 1896.



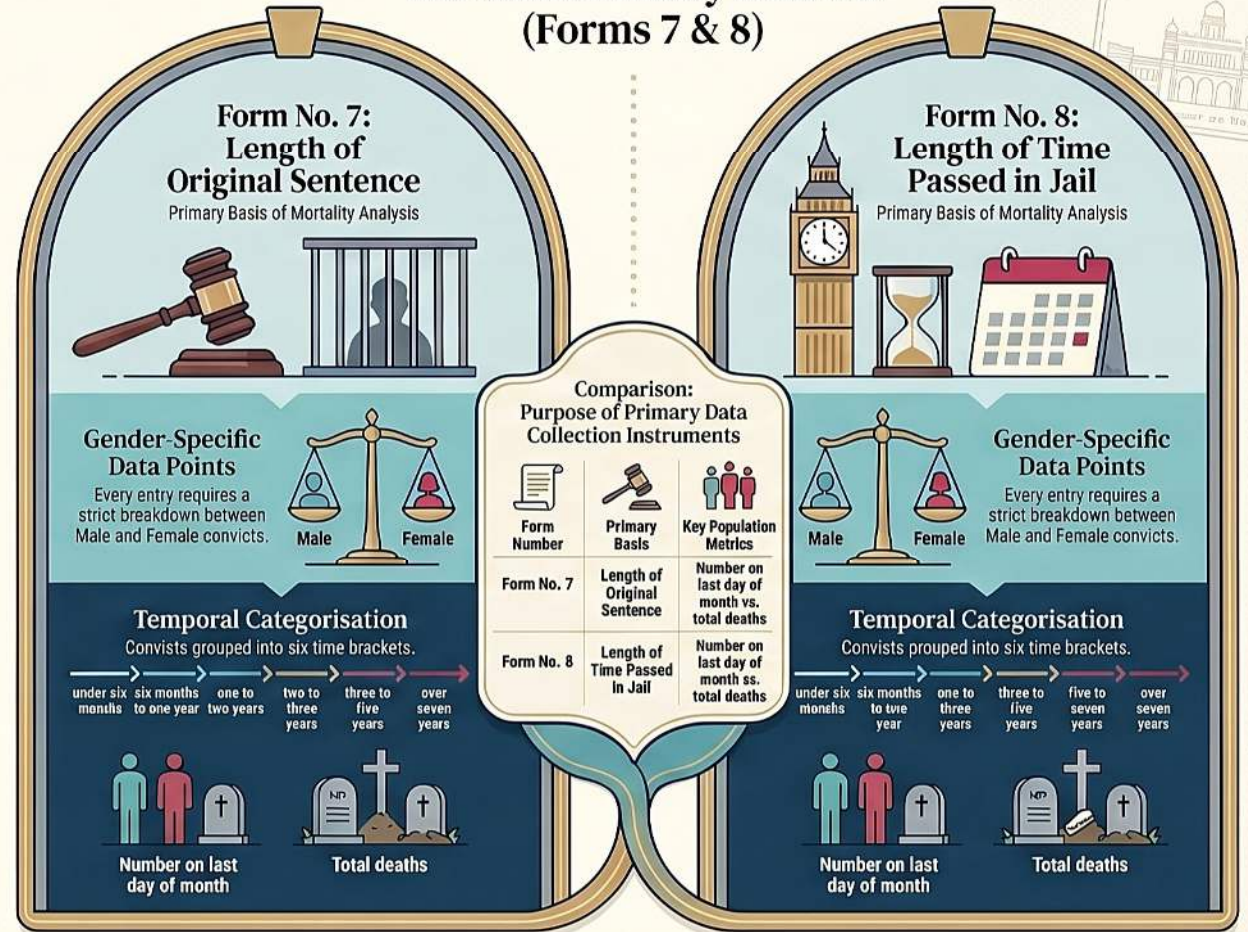
**Effective from 1st January 1895**  
All jails required to adopt revised forms retrospectively for the full calendar year.



## Retroactive Resubmission Required

Returns previously submitted for January through May 1895 had to be resubmitted using the new templates.

## Revised Mortality Returns (Forms 7 & 8)



## **Administrative Reporting Standards for Prison Mortality (1895)**

### **Executive Summary**

On June 19, 1895, the Office of the Inspector-General of Prisons for the North-Western Provinces and Oudh issued **Circular No. 6 of 1895**, a formal directive standardizing the reporting of convict mortality. This mandate introduced "Revised forms of Monthly Returns Nos 7 and 8," which were designed to provide granular data on inmate deaths relative to their legal sentences and their actual duration of incarceration.

The directive, issued by Surgeon Lt.-Colonel Geoffrey C. Hall, cancelled previous reporting protocols established in 1894 and required immediate, retroactive compliance for the entire 1895 calendar year. This transition highlights a systematic effort to improve the statistical tracking of health and mortality outcomes within the colonial penal system through demographic and longitudinal segmentation.

---

### **Administrative Overview and Authority**

The directive originated from the regional prison administration in Lucknow, targeting all operational jail heads within the North-Western Provinces and Oudh.

- **Issuing Authority:** Geoffrey C. Hall, F.R.C.S., Surgeon Lt.-Colonel and Officiating Inspector-General of Prisons.
  - **Recipients:** All Superintendents of Jails within the North-Western Provinces and Oudh.
  - **Date of Issue:** 19 June 1895.
  - **Legal Precedence:** The circular explicitly cancels the previous standard for Monthly Return No. 7, which had been prescribed by Circular Memo No. 4 on 14 January 1894.
- 

### **Implementation Directives**

The circular establishes a clear timeline for the adoption of the new reporting standards, emphasizing both immediate implementation and the rectification of past records for the current year.

- **Retroactive Reporting:** Although issued in June, the revised forms were mandated for use from the "commencement of the current calendar year (1895)."

- **Correction of Backlogs:** Superintendents were instructed to carefully prepare and submit returns for the months of January, February, March, April, and May 1895 using the revised forms at "an early date."
- **Distribution:** Six copies of the revised forms were forwarded to each Superintendent to facilitate this transition.

---

### Technical Specifications of Revised Returns

The revised forms, designated as No. 7 and No. 8, represent a bifurcated approach to analyzing mortality data, focusing on legal status (sentence length) versus physical duration of stay (time passed in jail).

#### Monthly Return No. 7: Mortality by Original Sentence

This form tracks mortality based on the severity or length of the judicial sentence handed down to the convict.

Category	Data Points Collected
<b>Demographic Rows</b>	Male, Female, Total
<b>Statistical Columns</b>	Number on last day of the month; Deaths
<b>Sentence Length Tiers</b>	Not exceeding 6 months; Above 6 months to 1 year; Above 1 year to 3 years; Above 3 years to 7 years; Above 7 years

#### Monthly Return No. 8: Mortality by Time Served

This form tracks mortality based on the actual amount of time the convict has spent within the prison system at the time of death or reporting.

Category	Data Points Collected
<b>Demographic Rows</b>	Male, Female, Total
<b>Statistical Columns</b>	Number on last day of the month; Deaths

<b>Incarceration Tiers</b>	Not exceeding 6 months in jail; Above 6 months to 1 year; Above 1 year to 2 years; Above 2 years to 3 years; Above 3 years to 7 years; Above 7 years
----------------------------	--

---

### **Analytical Significance of the Forms**

The structure of these forms indicates a specific interest in identifying whether mortality was more prevalent among newly admitted inmates or long-term prisoners.

1. **Form No. 7** allows the administration to correlate health outcomes with the "type" of prisoner (short-term vs. long-term offenders).
2. **Form No. 8** provides a longitudinal view of health, allowing for the identification of "acclimatization" issues or the long-term physical toll of the prison environment.
3. **Gender Segmentation:** Both forms require strict separation of data between male and female convicts, ensuring the administration can monitor sex-specific mortality trends.