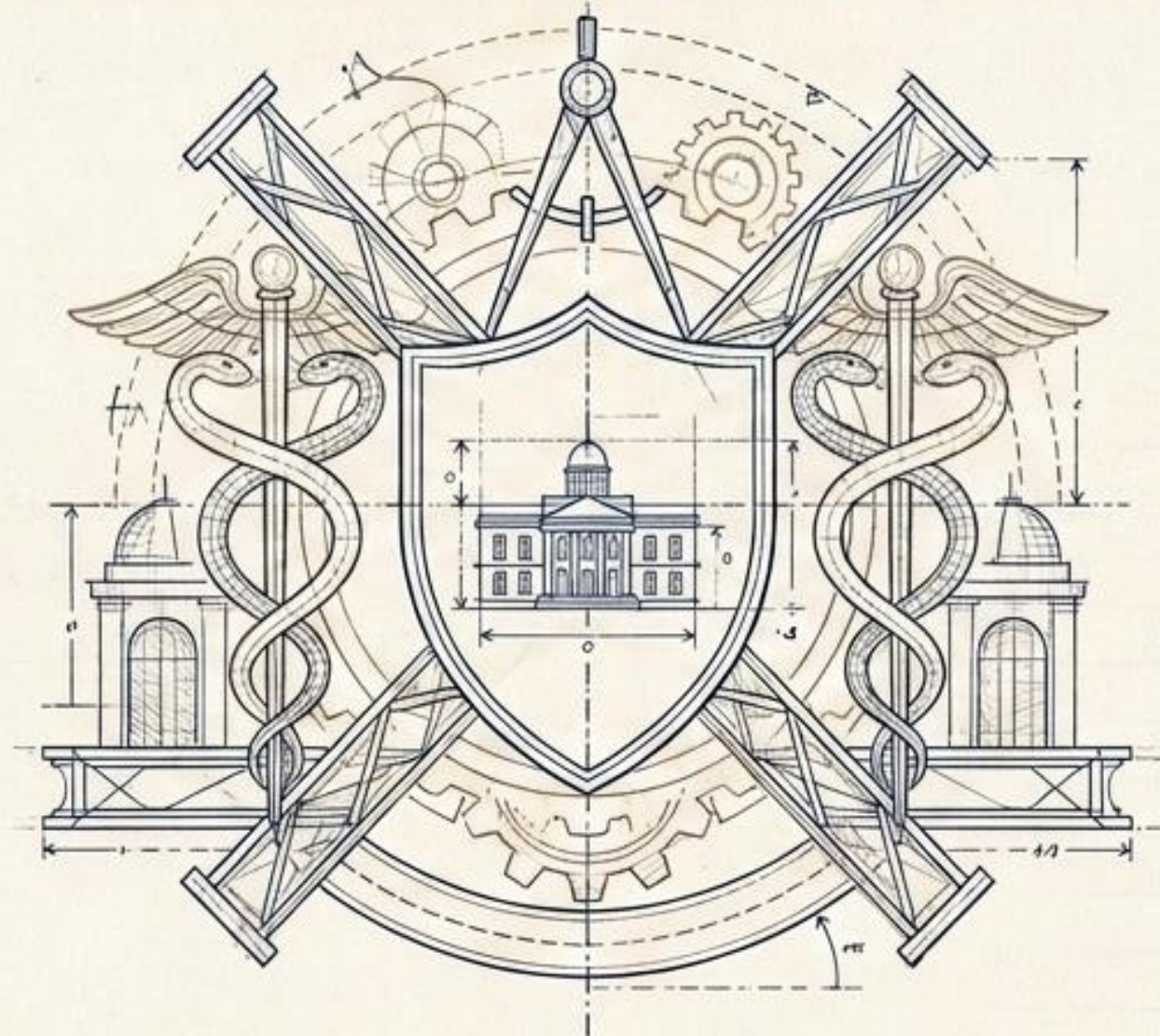


CRIMINOLOGICAL INSIGHTS

BY DR.MRIDUL SRIVASTAVA



ARCHIVAL EXTRACT: 1912

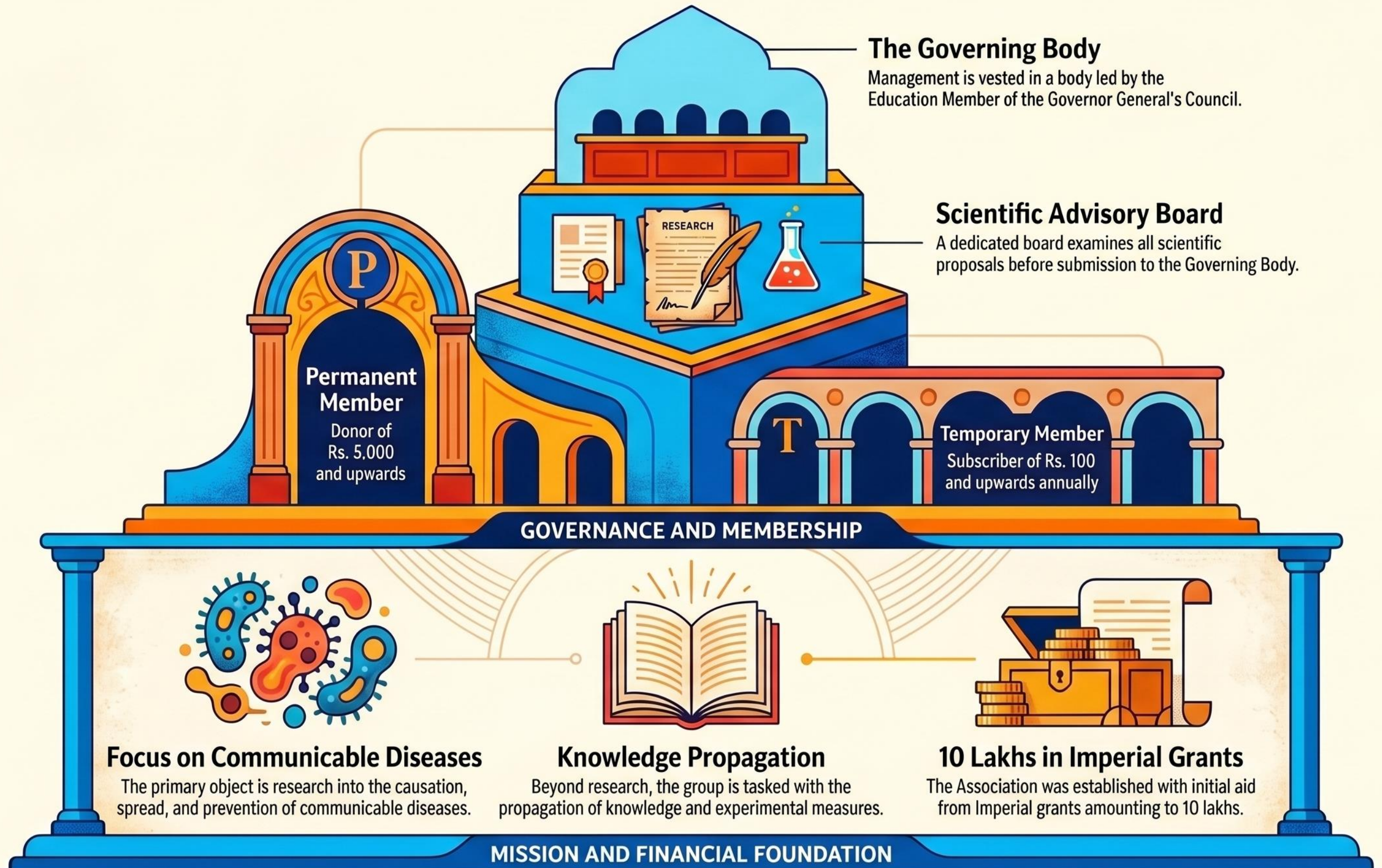
The Architecture of Colonial Public Health



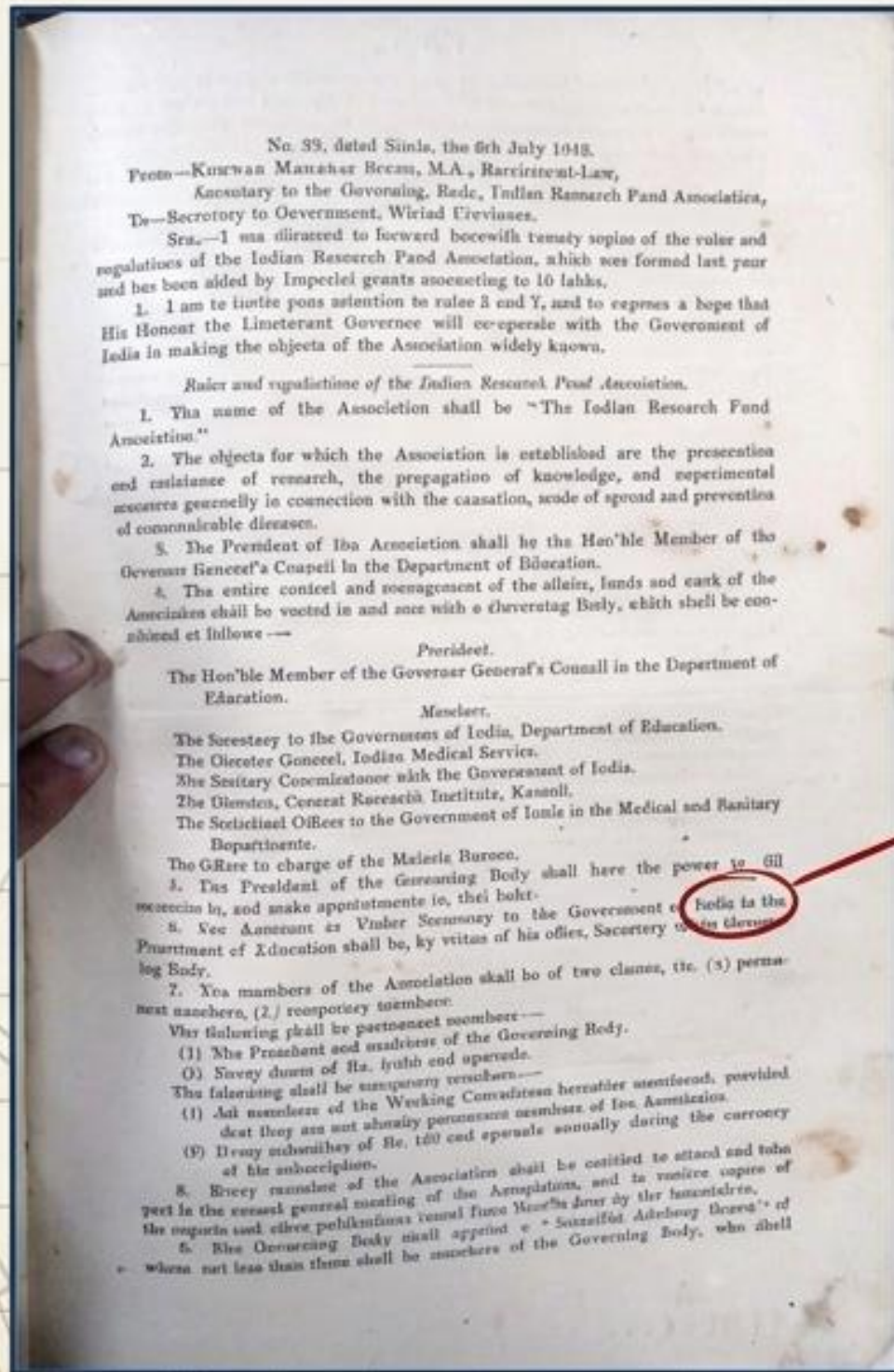
Deconstructing the 1912 Regulations of
the Indian Research Fund Association.

ARCHIVAL EXTRACT: 1912

Foundations of the Indian Research Fund Association (1912)



The Imperial Catalyst



Ledger Extract

The Date

Formed 1911, rules distributed 8th July 1912 from Simla.

The Capital

Aided by Imperial grants amounting to 10 lakhs.

The Objective

To prosecute research and coordinate measures against communicable diseases (Rules 1 & 2).

The Interlocking Mandate

The Laboratory

Prosecution and
assistance of
research.

The Field

Experimental
measures generally
in connection with
the causation, mode
of spread and
prevention.

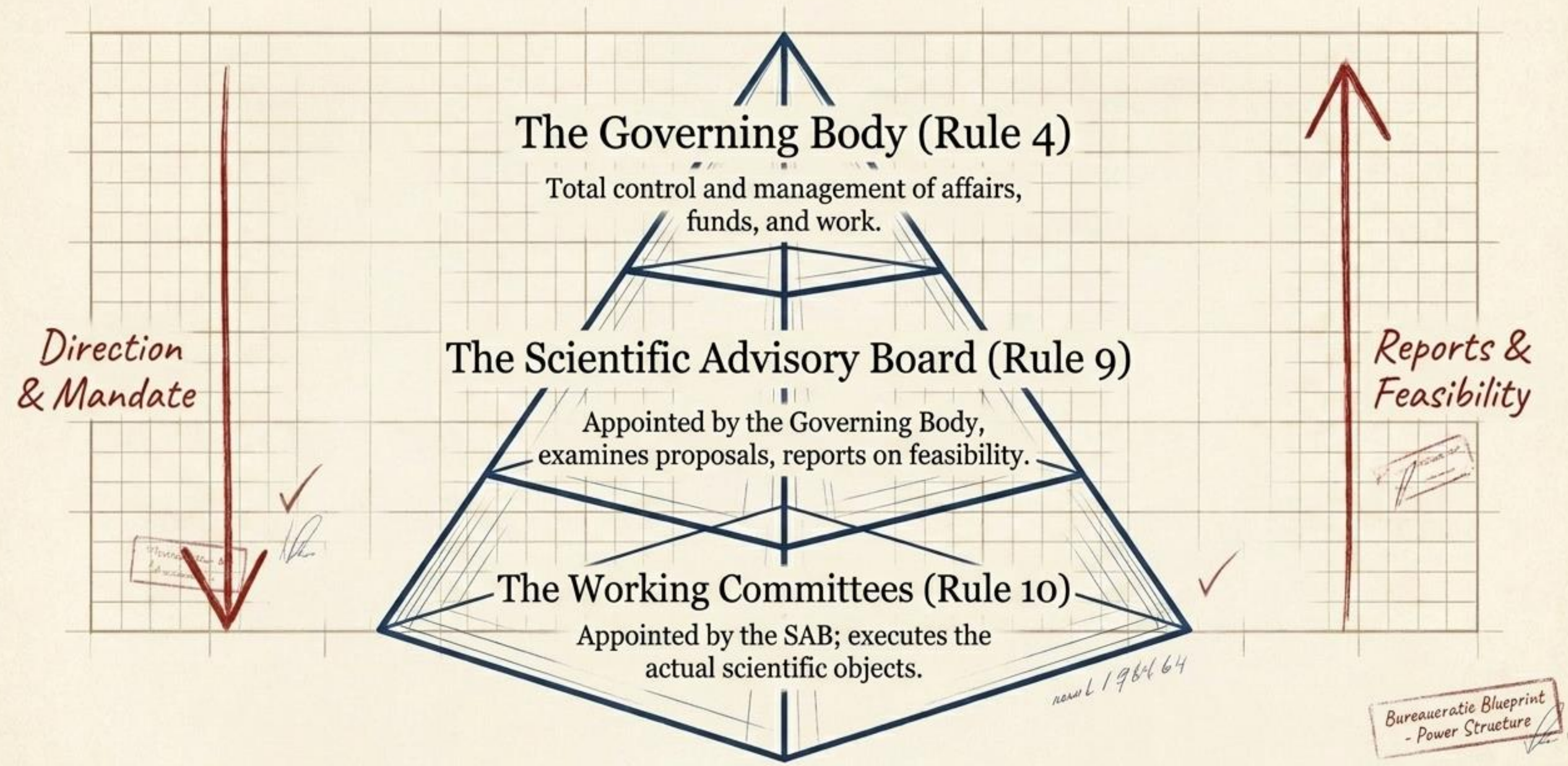
The Public

The propagation
of knowledge.

Singular Target: Communicable Diseases ✓

The IRFA was not merely a funding body; it was designed as a comprehensive engine for both discovering cures and deploying them.

The Pyramid of Institutional Power



The 1912 Brain Trust

Governor General's Council in the Department of Education.

4. The entire control and management of the affairs, funds and work of the Association shall be vested in and rest with a Governing Body, which shall be constituted as follows:—

President.

The Hon'ble Member of the Governor General's Council in the Department of Education.

Members.

The Secretary to the Government of India, Department of Education.

The Director General, Indian Medical Service.

The Director, Central Research Institute, Kasauli.

The Statistical Officer of the Government of India in the Medical and Sanitary

Annotated Roster

	The Administrators		The Scientists
	<ul style="list-style-type: none">- The President (Hon'ble Member, Dept. of Education)- Secretary to Gov. India (Dept. of Education)- Statistical Officer		<ul style="list-style-type: none">- Director General, Indian Medical Service- Sanitary Commissioner- Director, Central Research Institute, Kasauli- Officer in charge, Malaria Bureau

Rule 4 legally bound administrative power directly to boots-on-the-ground scientific leadership. Public health research was driven by medical experts but governed by the imperial purse.

Diagnostic Matrix: The Distribution of Authority

	Governing Body	Scientific Advisory Board	Working Committees
Primary Function	Control & Management ✓	Proposal Examination & Feasibility (Rule 9)	Direct Execution of Science (Rule 10) ←
Formation	Constitutional (Defined by titles in Rule 4)	Appointed by Governing Body (min. 3 GB members)	Appointed by the Scientific Advisory Board
Tenure	Permanent oversight	Elected for one year (eligible for re-election)	Deployed as needed for specific objects

The Economics of Membership

Rules 7.—Qualification: By constitutional Role or law of the donation members or under the Constitutional association state and general venrtins of **Rs. 5,000** en the parsicipation of emesnt the members of any the mster recaired in perpetuity.

Rules 8.—Tempororalization: Working Committee deployment or Annual Subscription **Rs. 100** or membors timo. — Duration: Annually, during currency of subscription.

Permanent Members

- **Qualification:** By Constitutional Role or Donation
- **Duration:** In perpetuity

Rs. 5,000+

Temporary Members

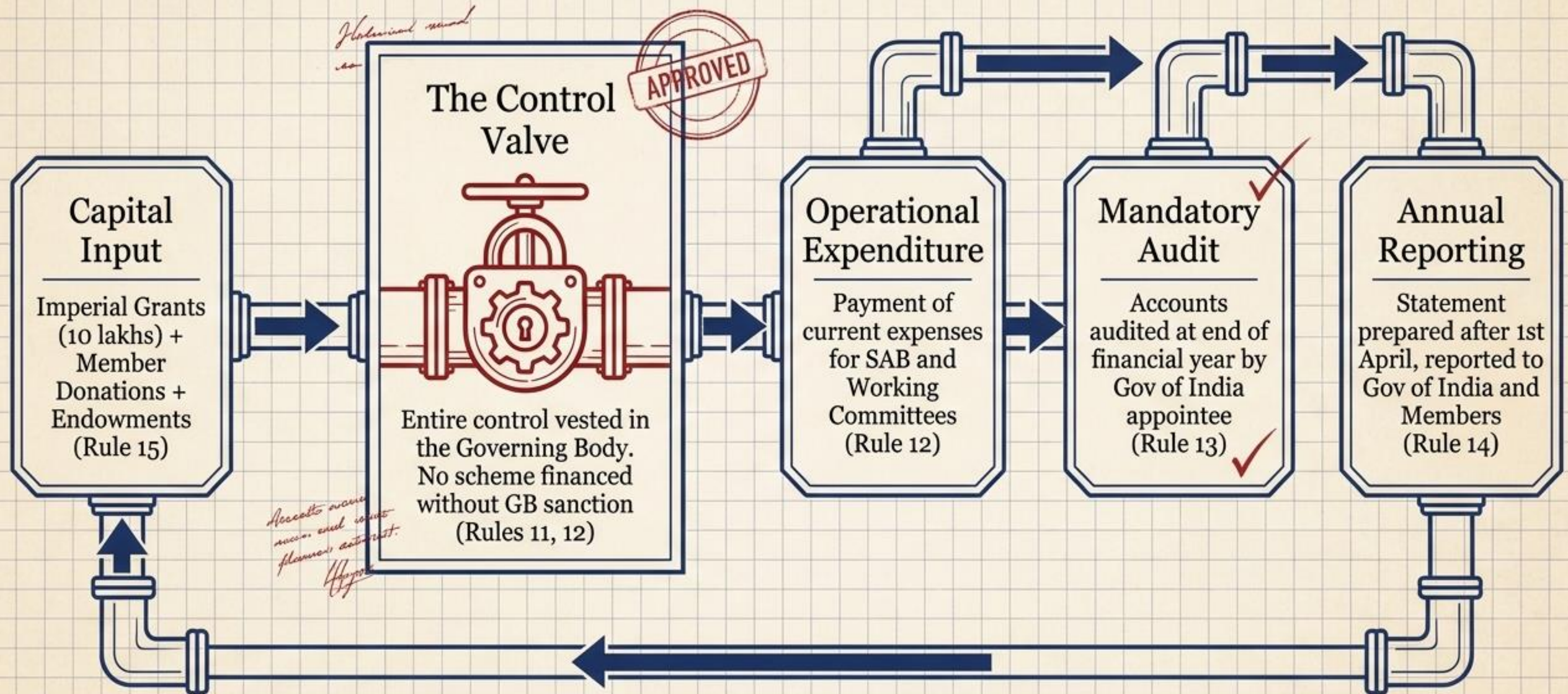
- **Qualification:** Working Committee deployment or Annual Subscription
- **Duration:** Annually, during currency of subscription

Rs. 100+

Base Rights (Rule 8):

All members entitled to attend the annual general meeting and receive association reports.

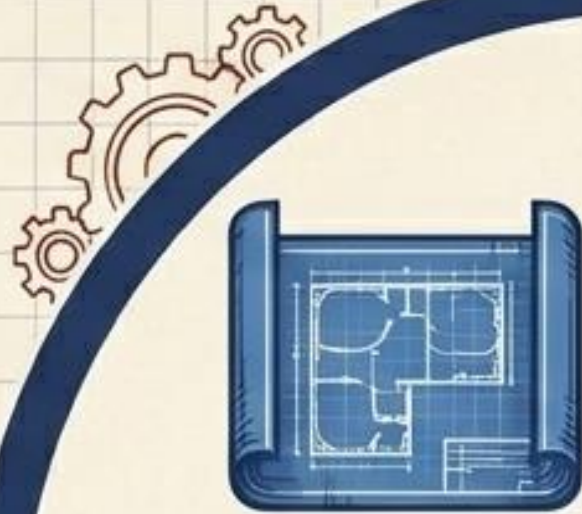
The Financial Engine: Capital Control



The Lifecycle of a Medical Proposal

Submission

A scientific proposal targeting communicable diseases is drafted.



Feasibility Review (Rule 9)

The Scientific Advisory Board examines the proposal and formally reports on its feasibility.



Scientific Execution (Rule 10)

A Working Committee is appointed by the SAB to execute the sanctioned research.



Dependency Line

No funding could bypass the Governing Body

Executive Sanction (Rule 11)

The Governing Body reviews the SAB report. If approved, financial sanction is granted.



*Scientific execution
is essential for
the success of
the proposal.*
H. J. P. S.

The Communication Cascade

Imperial Origin: Simla (July 8)
issues 20 copies of the rules.

Provincial Hub: Naini Tal (Aug 21) -
Medical Dept. receives mandate.

Regional Admin: Forwarded to
all Commissioners of divisions.

Local Enforcement: Forwarded
to Heads of departments.

*The Micro-Level: Routed explicitly
to all Superintendents of Jails.*

16. A general meeting of the Association shall be held once in every year, as soon as possible after the preparation of the annual accounts and report, at such place and time as the Governing Body may appoint.

Meetings of the Governing Body, the Scientific Advisory Board and the Working Committees shall be held as often as may be necessary.

17. The Governing Body, may frame such rules as may be necessary for the discharge of business generally, including the conduct of correspondence and the holding of meetings.

No. 434/V—106 of 1912.

MEDICAL DEPARTMENT,

Dated Naini Tal, the 21st August 1912.

Copy forwarded to all Commissioners of divisions, United Provinces, for information with the request that they will make the objects of the association widely known.

No. 435.

85-90
5.50 Copy also forwarded to the Heads of departments for information and communication to subordinate officers.

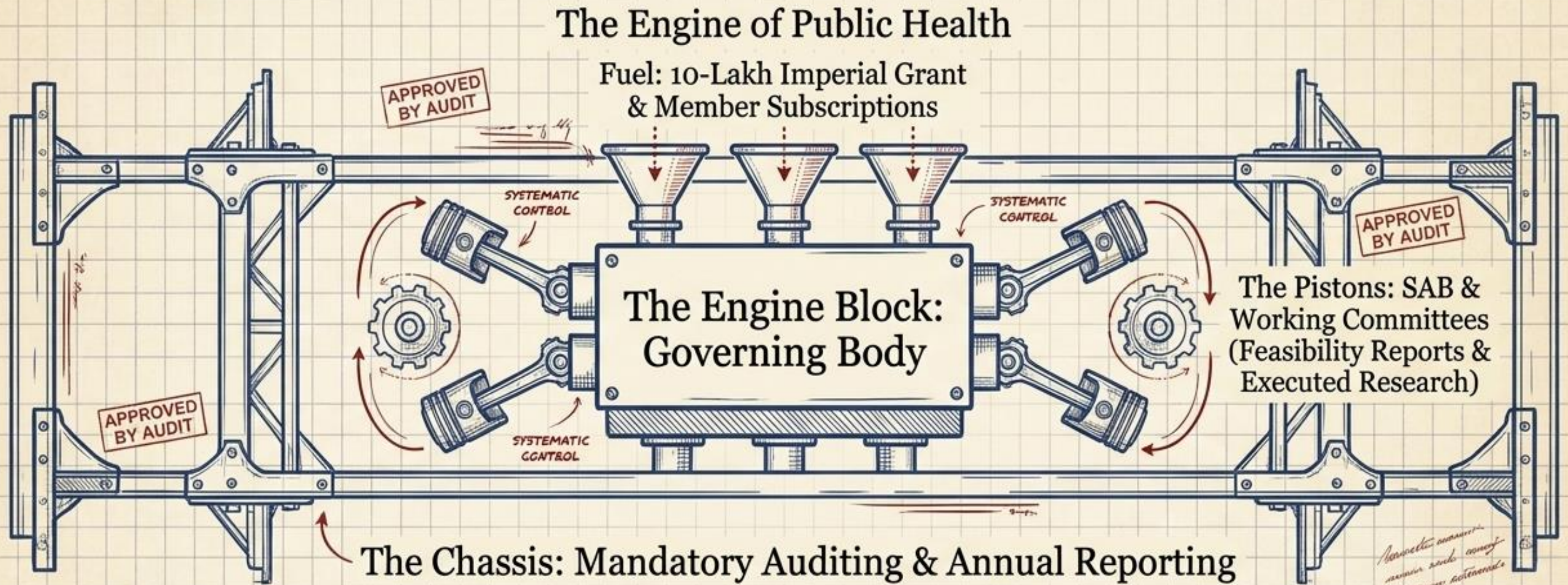
By order of the Hon'ble the Lieutenant Governor, United Provinces,
J. M. CLAY,

Under Secy. to Govt., United Provinces.

By Order

Public health mandates did not stop at regional commissioners; they were systematically pushed down to the specific administrators managing vulnerable, confined populations.

A Systems View of the IRFA



The 1912 regulations engineered a self-sustaining loop. By locking elite scientific research behind rigorous financial auditing and strict hierarchical deployment, the colonial administration built a blueprint for institutional public health that merged imperial oversight with medical advancement.