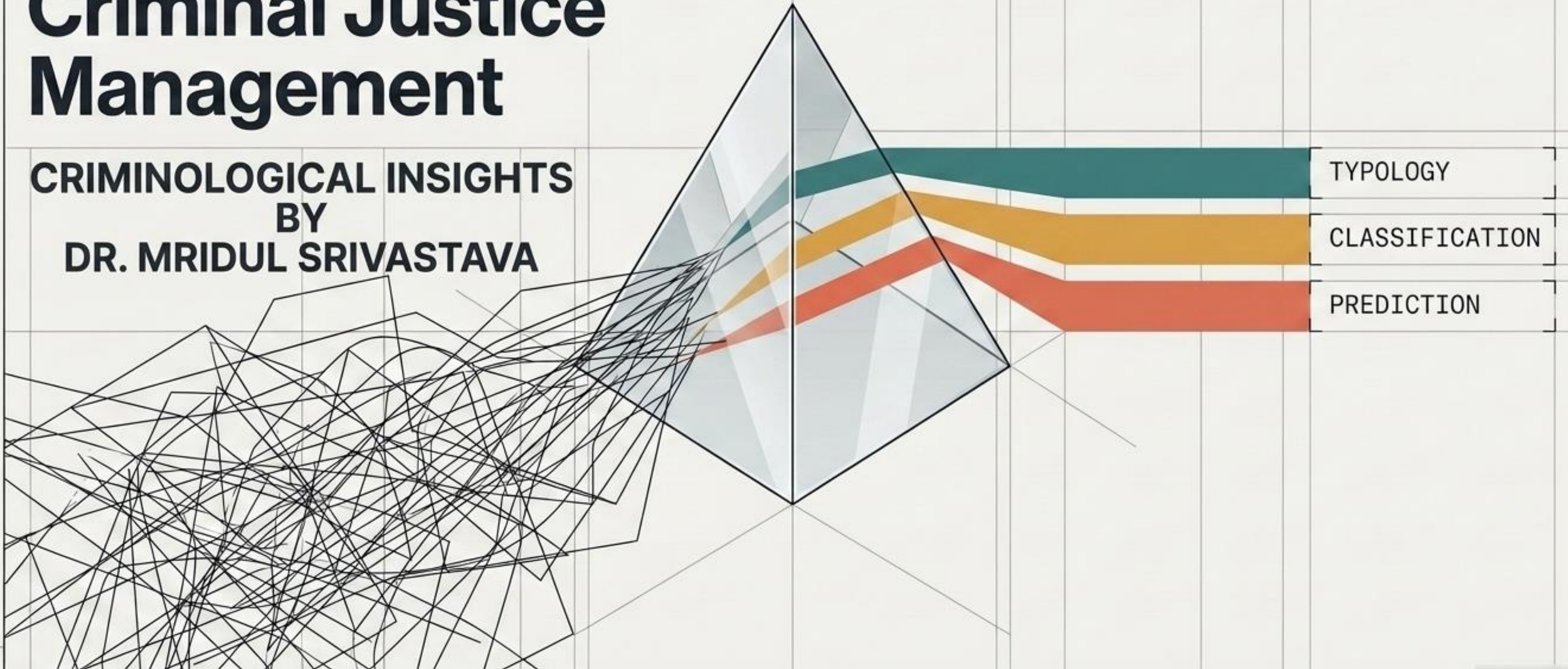


Organising Chaos: The Systems of Criminal Justice Management

CRIMINOLOGICAL INSIGHTS
BY
DR. MRIDUL SRIVASTAVA



Mapping Criminality: From Typology to Treatment

CONCEPTUAL OFFENDER TYPOLOGIES



The Legal Baseline: Crime & Morality

Mala en se

Acts directly damaging to society and universally condemned.

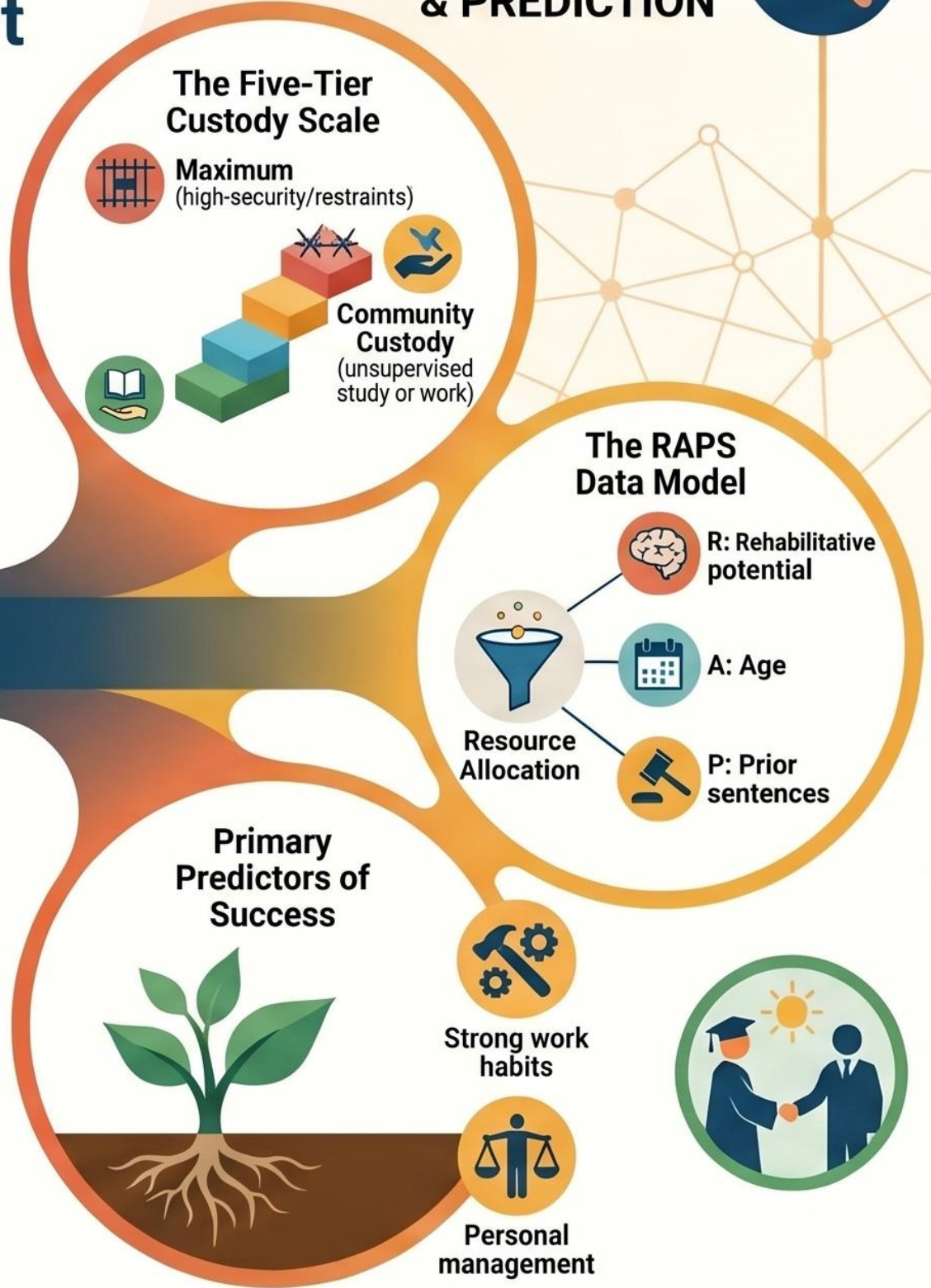
Murder, Theft

Mala prohibita

Regulatory offences that vary across cultures and societies.

Traffic violations, Licensing laws

OPERATIONAL CLASSIFICATION & PREDICTION



The Core Triad of Offender Management

Typology	Classification	Prediction
<p>Phase: The Diagnosis</p> <p>Purpose: Understanding and categorising deviant behaviour and motivations.</p> <p>Clinical Analogy: Identifying the symptoms and pathology.</p>	<p>Phase: The Prescription</p> <p>Purpose: The physical and programmatic action of placing offenders based on resources, law, and risk.</p> <p>Clinical Analogy: Assigning a hospital ward and treatment plan.</p>	<p>Phase: The Prognosis</p> <p>Purpose: Measuring and forecasting the likelihood of future success or failure.</p> <p>Clinical Analogy: Estimating recovery and relapse probability.</p>

These three systems reduce the infinite variety of human problems into actionable, institutional pathways.

The Typological Focus Map

Public Reaction (Cavan)

Focuses on how society interacts with the offender's self-concept.

Behavioural Drive (Glaser)

Focuses on motivation (e.g., Vocational predators vs. Crisis-vacillation predators vs. Addiction-supporting predators).

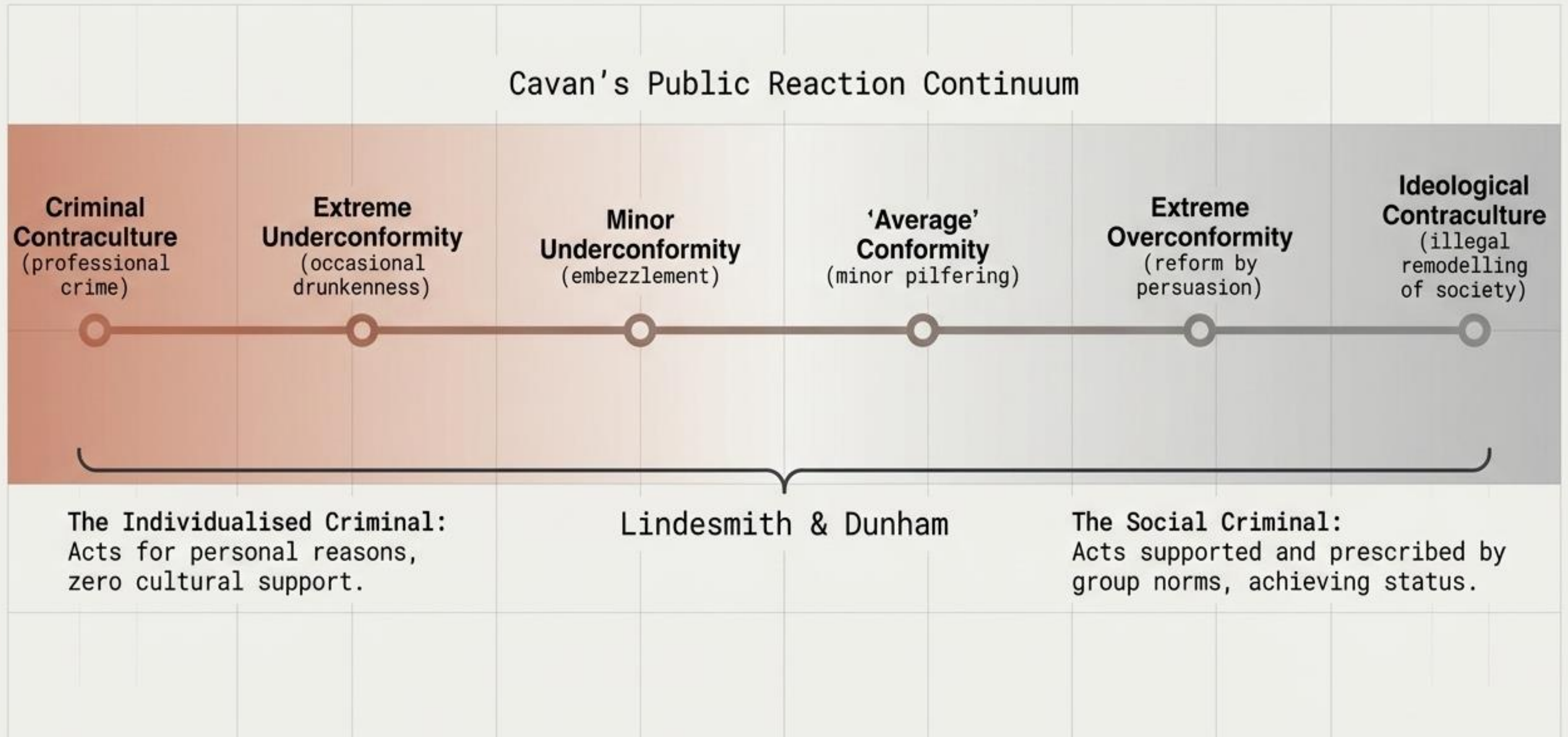
Arrest History (Roebuck & Cadwallader)

Focuses on quantitative patterns (e.g., studying 400 arrest histories to find single, multiple, and mixed offence patterns).

Inmate Culture (Caldwell)

Focuses on informal prison hierarchies (e.g., Right guys, Politicians, Dope peddlers) and the strict prisoner's code (never squeal; fraternisation prohibited).

The Social Alignment Spectrum



Classification: The Systemic Reality

The Clinical Ideal



Sorting Mechanism: Diagnostic and prescriptive typologies.

Goal: Address the root causes (conflict with values, relationships, material needs, self-concept).

Limitation: System lacks the staffing and advancement to implement efficiently.

The Systemic Reality



Sorting Mechanism: Legal severity and escape risk.

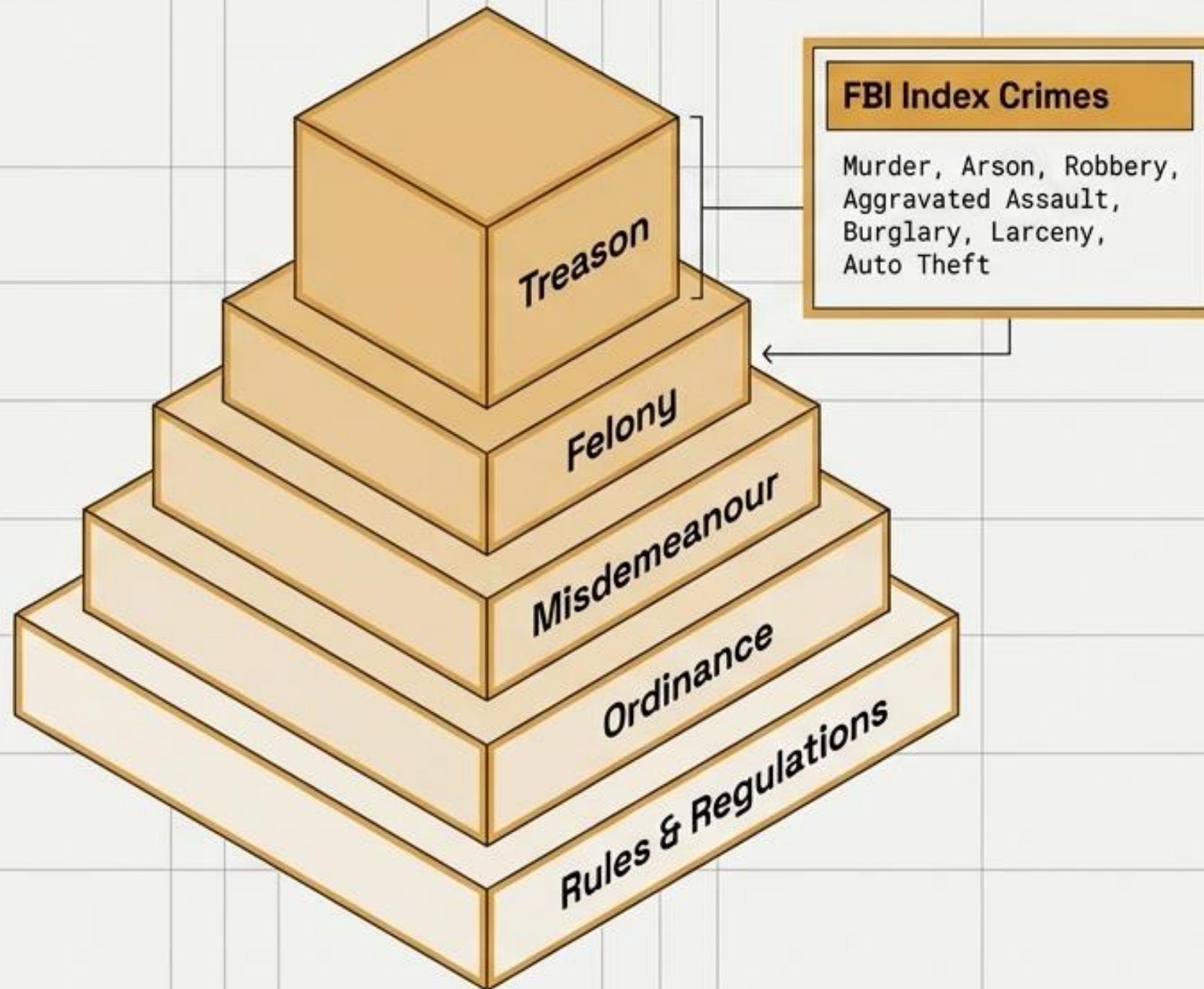
Goal: Determine custody level and institutional safety.

Execution: Categorisation based heavily on age, criminal history, and the most recent offence.

Takeaway: Despite a century of accumulated knowledge on psychological typologies, the system primarily classifies people based on the law and the likelihood they will run.

The Architecture of Legal Classification

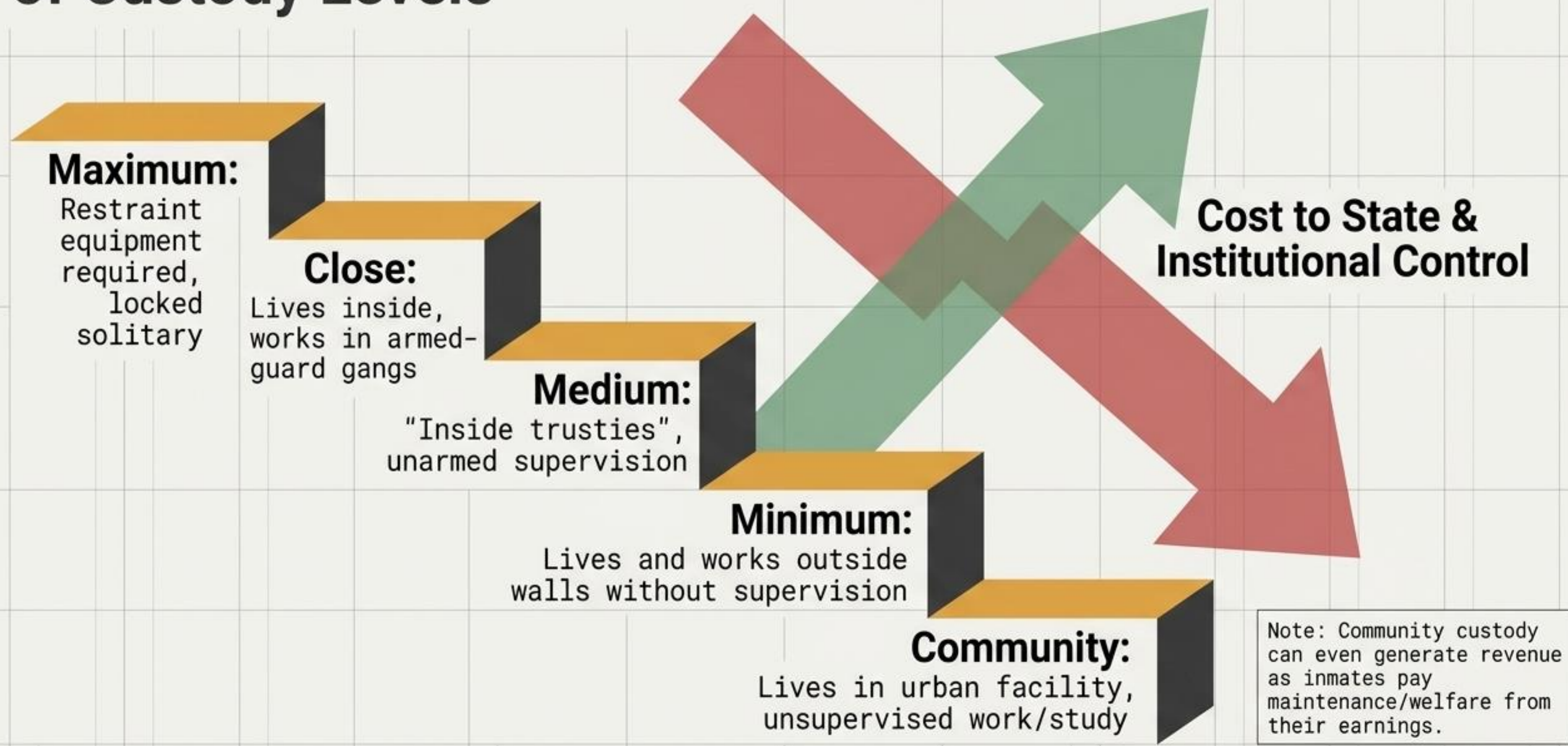
The Administrative Hierarchy



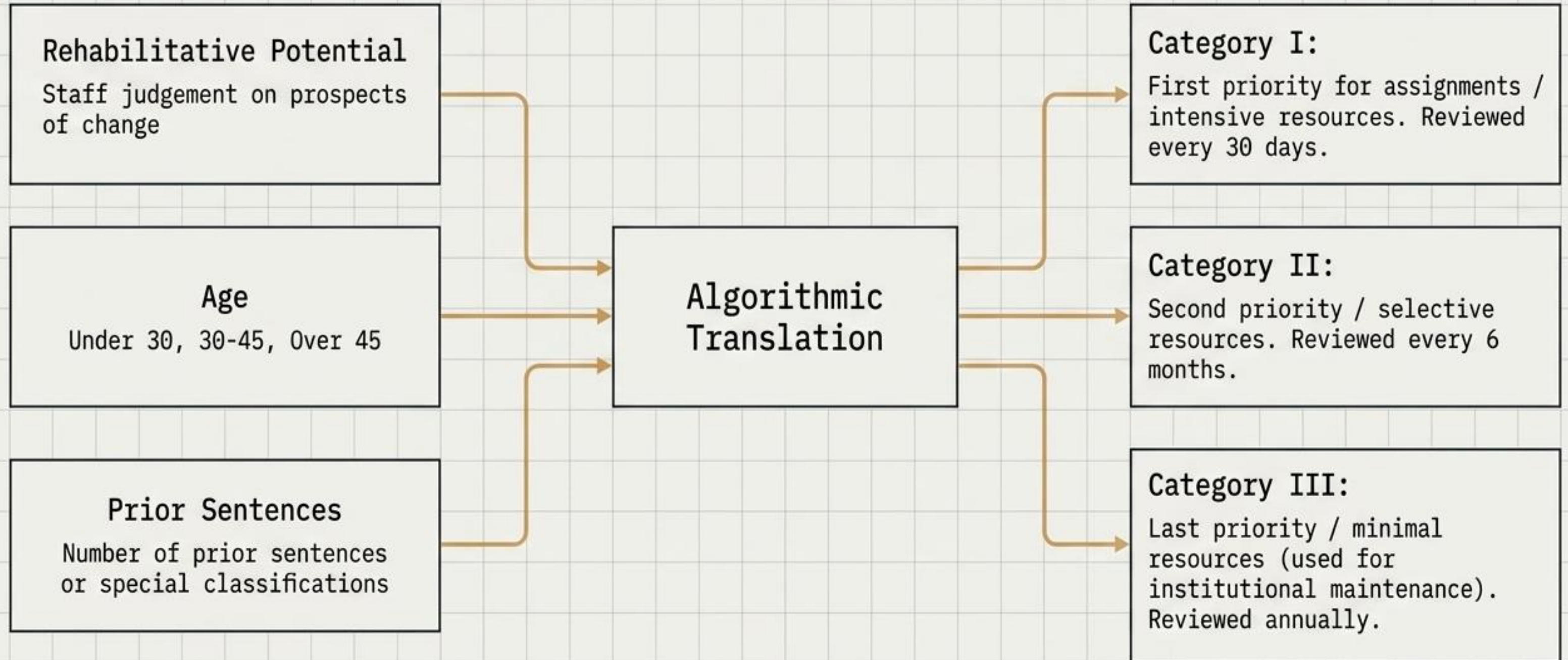
The 'Mala' Distinction Map



The Inverse Relationship of Custody Levels



The RAPS Classification Algorithm



Predicting the Prognosis

Prediction determines the probability of successful adjustment post-incarceration. From early studies by Warner and Burgess to Ohlin's parole metrics, the system attempts to weigh variables to foresee recidivism.

Positive Factors

- Family ties
- Previous work record
- Rural background
- Shrewdness
- Critical choice of friends



Negative Factors

- Emotional instability
- Previous hoodlum activities
- Extreme interest in clothes
- Love of "white lights" (cabarets/dance halls)

Historical Note: Ferris Laune's 1936 study relied on the predictive "hunches" of fellow inmates to build its scale—most notably using the infamous inmate Nathan Leopold as a primary research assistant.

The Predictive Factor Dashboard

Environmental Domain (The Gluecks & Ohlin)

- Family cohesion and parental understanding.
- Type of community (Urban vs. Rural).
- Presence of foreign-born parentage or broken homes.

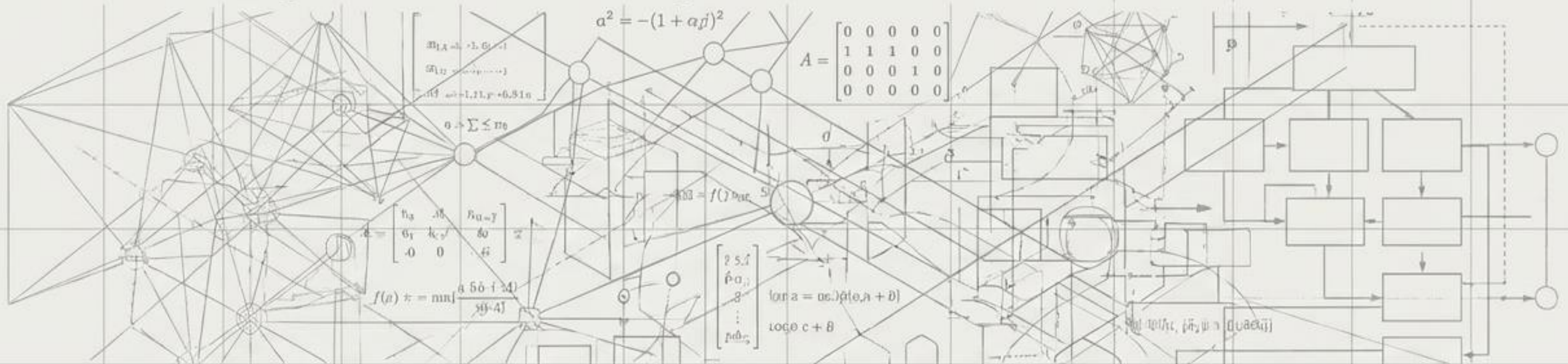
Behavioural Domain (Hewitt & Jenkins, Kvaraceus)

- Socialised delinquency (gang loyalty) vs. Unspecialised aggression (unwanted, unaffectionate).
- School performance and use of leisure time.

Historical Domain (Fox)

- General adjustment to prison life.
- Age of onset of criminality.
- Recidivism history.

The Reality of Social Adjustment



Despite the vast complexity of clinical typologies and systemic classification algorithms, the true predictors of successful social adjustment are strikingly mundane.



Work Habits:
Maintaining steady industry and employment.



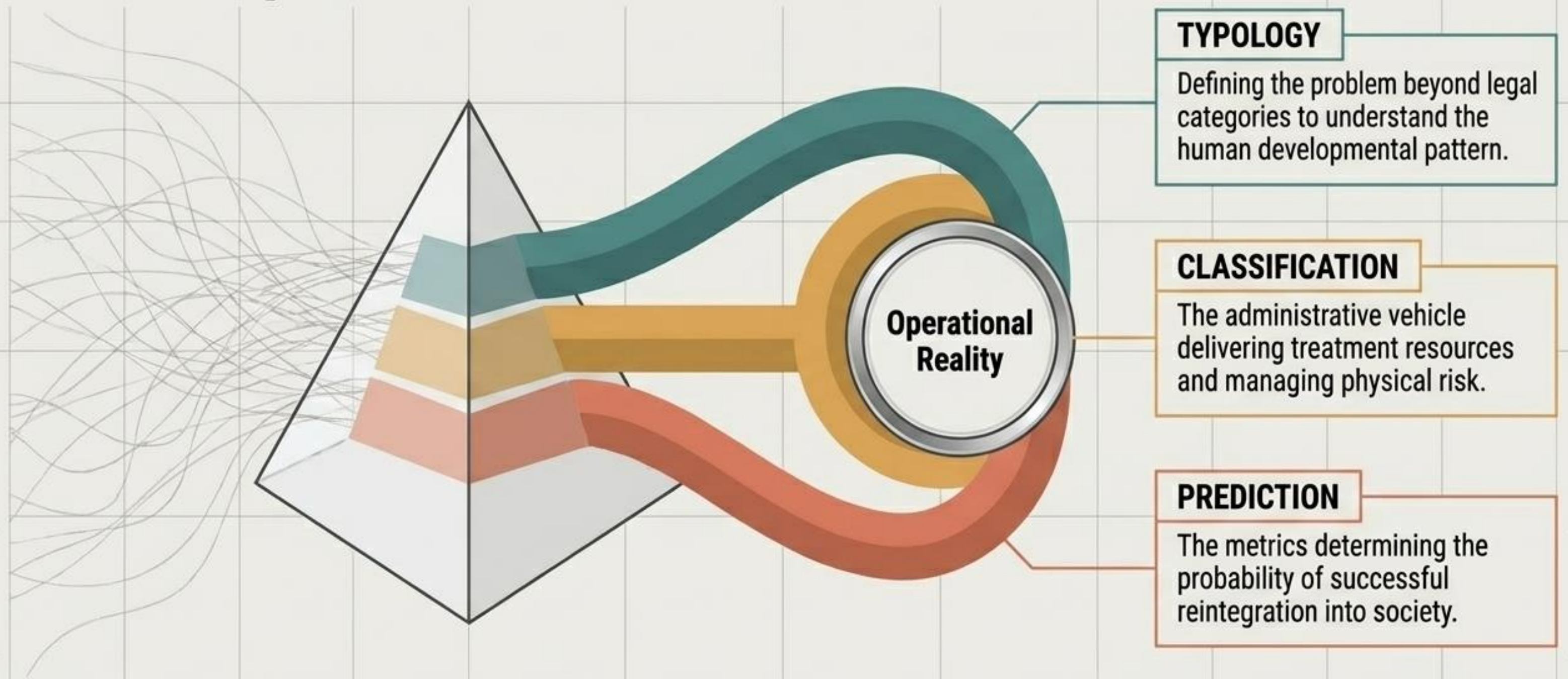
Personal Finance:
Managing personal affairs (budgeting records, credit ratings).



Avoiding Attention:
Simply avoiding behaviour that attracts police or prison guard scrutiny.

These primary determinants dictate success not just **within the criminal justice system, but within the total structure of society.**

The Complete Filtration Prism



Together, these three mechanisms form the **operational definitions** of the criminal justice system—transforming an infinite variety of human deviation into manageable, systemic action.